

Unleash Intelligence in your data with Intel® Xeon® 6 in HPE ProLiant Compute Gen12

Alex Cheng, Taiwan Consumption Director, Sales & Marketing Group, Intel Corporation

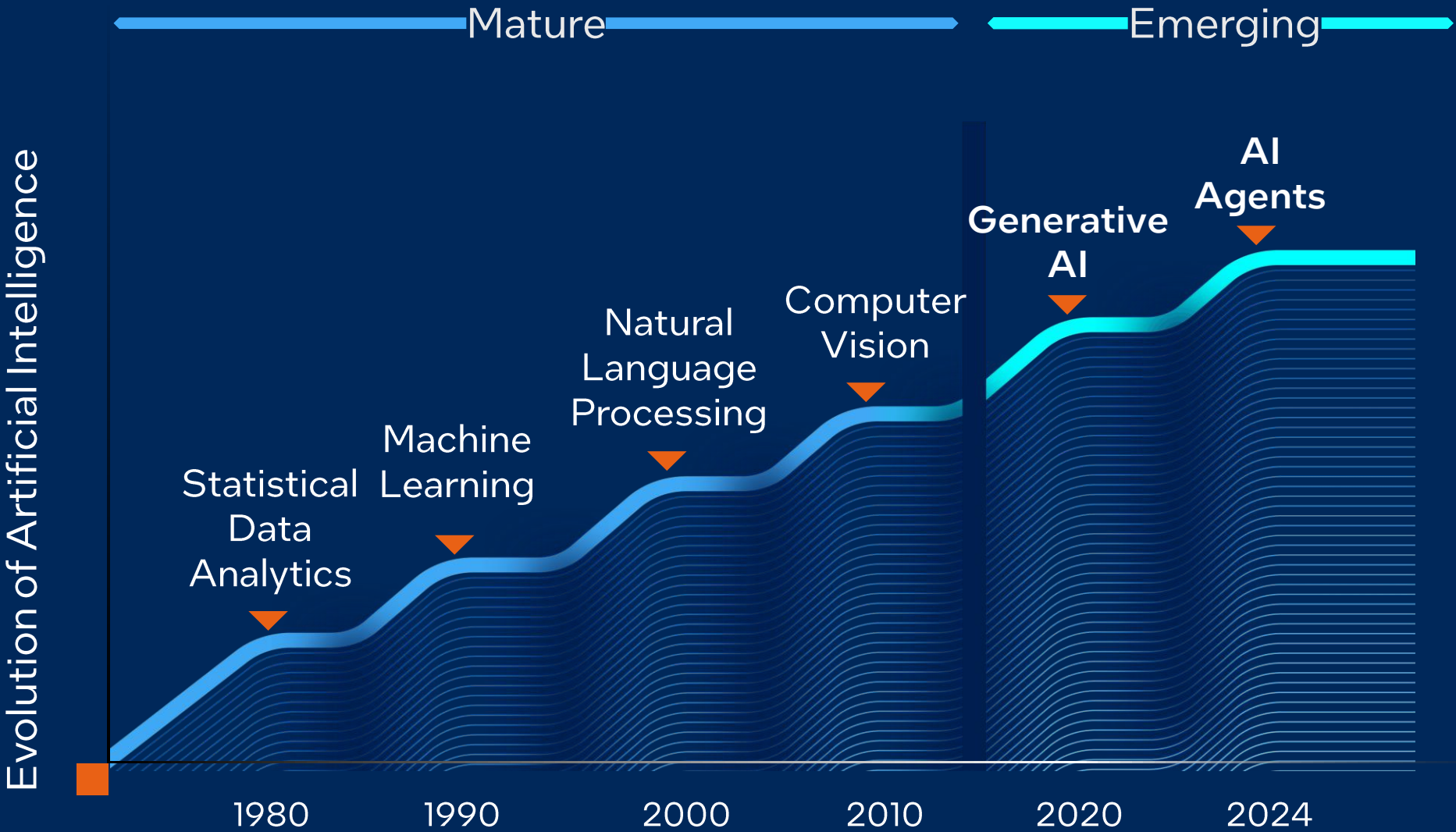
October 16, 2025

Shifting the AI Conversation

From GenAI to Enterprise AI



Evolution of Intelligence in Enterprise use cases



Corporations are Deploying AI into Many Use Cases

Example AI Use Cases by Industry



Education	Teacher Assistant	Smart Campus	Adaptive Teaching
Health	Lab Automation	Precision Medicine	Medical Imaging
Finance	Algorithmic Trading	Customer Portfolio Assistant	Risk / Credit Assessment
Retail	Voice Ordering	Order Automation	Dynamic Promotions
Government	Gov Services Chatbot	Situational Awareness	Live Language Translation
Energy	Energy Consumption Forecasting	Operational Performance	Failure Prediction
Automotive	Attention Monitoring	Active Safety Risk Detection	Adaptive Controls
Manufacturing	Factory Automation	Quality Control	Robotics
Telco	Personalized Customer Services	Network Automation	Operational Performance

Intel Xeon CPUs Along the AI Spectrum

Offering openness and flexibility to adapt to new trends

Classical ML Models	Small GenAI Models	Large GenAI models
Data Analytics	<20B parameters	>20B parameters
Media Analytics	Chatbot (<20B parameters)	Xeon as Host CPU for AI accelerated systems
Virtual Desktop Infrastructure (VDI)	Summarization (<20B parameters)	
Vector Search Embedding (for RAG)		
ResNe t 50	Llama 7B	GPT-4 40B
DLRM	Mistral 7B	Claude 3 100B+
BERT Large	Phi-3 8B	
...

HPE ProLiant Gen12 with Intel® Xeon® 6



Ecosystem

Choice, Domain Expertise, No lock-in.

Innovation

Edge to Datacenter & Cloud

Efficient

Right server for the job
Right size the solution

Secure

Data as your IP & Models as your IP

Xeon 6 is the world's best processor for AI with **Built-in Accelerators**

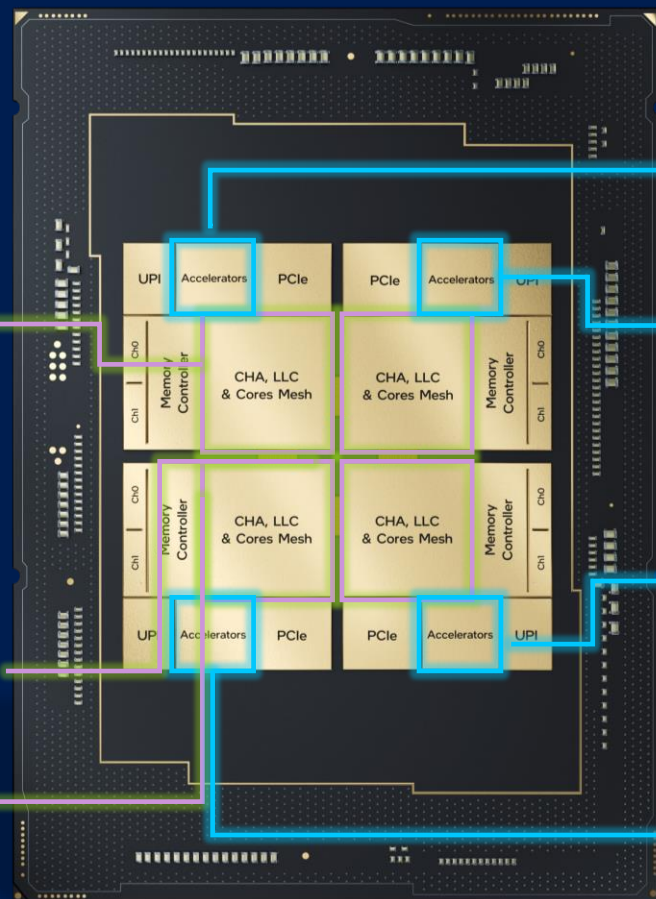
Part of the Instruction Set Architecture (ISA)

Always Available

Advanced Matrix Extensions (AMX)
to boost AI inference and training with 2d tiles operations

Advanced Vector Extensions 512 (AVX 512)

5GISA



Built-in Accelerators

Intel® Data Streaming Accelerator (DSA)
to speed up data movement

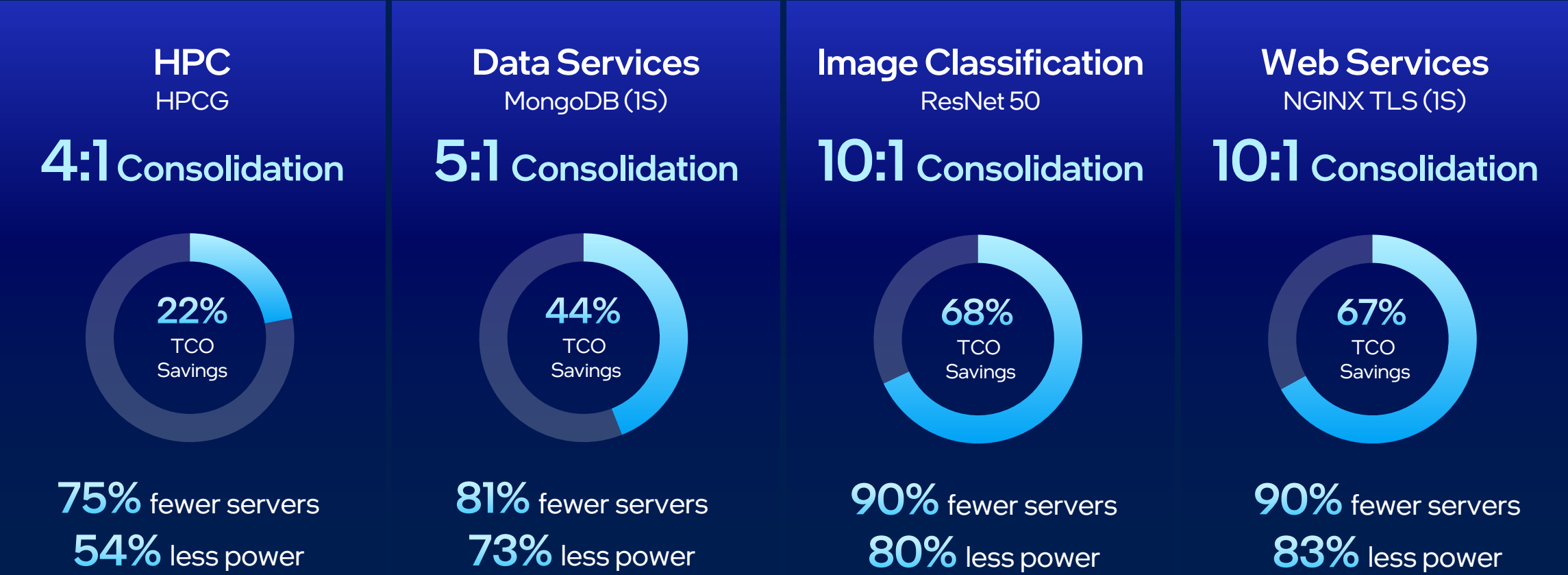
QuickAssist Technology (QAT)
for faster encryption and bulk data compression

In-Memory Analytics Accelerator (IAA)
to boost database performance with lower memory bandwidth

Dynamic Load Balancer (DLB)
to optimize queue scheduling and packet processing

Refresh Aging Infrastructure to Save Space and Cost

Replace 2nd Gen Intel® Xeon® processor-based servers with Intel Xeon 6 processor-based servers



*Estimated over 4 years. See [7T21, 7T22, 7T25, 7T26] intel.com/processorclaims: Intel Xeon 6. Results may vary.

intel ai Three Decades of Integrating AI Into Our Enterprise

Cuts Downtime and
Costs with
Fault Detection Systems



Improve manufacturing
productivity

10x

Less
Expensive

66%

Less
downtime

Smart Manufacturing
Using Computer Vision
and AI for Inline Inspection



Supply chain
resilience

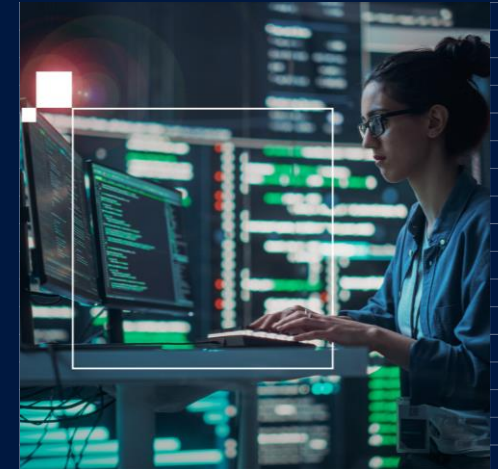
\$2M

Savings /
year

90s

For 20GB
Processing

Autonomous Quality
in AI Model
Productization



Employee
productivity

\$1.5B

AI Value
generated

500

new models
deployed in one year

Call to Action: Infuse Intelligence with Intel® Xeon® 6 and HPE ProLiant Compute Gen12



Video Cameras



Static Images



Chat Bots

AI optimized



4U, 2P
HPE ProLiant Compute
DL380a Gen12

TCO/Power optimized



1U, 1P
HPE ProLiant Compute
DL320 Gen12



2U, 1P
HPE ProLiant Compute
DL340 Gen12

VM/Data, Density optimized



1U, 2P
HPE ProLiant Compute
DL360 Gen12



2U, 2P
HPE ProLiant Compute
DL380 Gen12

Blade optimized



HPE Synergy
SY480 Gen12

SMB/Edge optimized



2P Tower
HPE ProLiant Compute
ML350 Gen12

Big Data optimized



4U, 4P
HPE ProLiant Compute
DL580 Gen12



Notices and Disclaimers

Performance varies by use, configuration and other factors. Learn more on the [Performance Index site](#).

Performance results are based on testing as of dates shown in configurations and may not reflect all publicly available updates. See backup for configuration details. No product or component can be absolutely secure. Results have been estimated or simulated.

Your costs and results may vary.

Intel technologies may require enabled hardware, software or service activation.

Intel does not control or audit third-party data. You should consult other sources to evaluate accuracy.

All product plans and roadmaps are subject to change without notice.

Code names are used by Intel to identify products, technologies, or services that are in development and not publicly available. These are not "commercial" names and not intended to function as trademarks.

© Intel Corporation. Intel, the Intel logo, and other Intel marks are trademarks of Intel Corporation or its subsidiaries. Other names and brands may be claimed as the property of others.

The slide features a dark blue background. A large, dark blue rectangle is positioned on the left side. To its right, there are two horizontal bars: a blue one at the top and a green one at the bottom. The text "Thank You" is written in white, bold, sans-serif font on the dark blue rectangle.

Thank You