

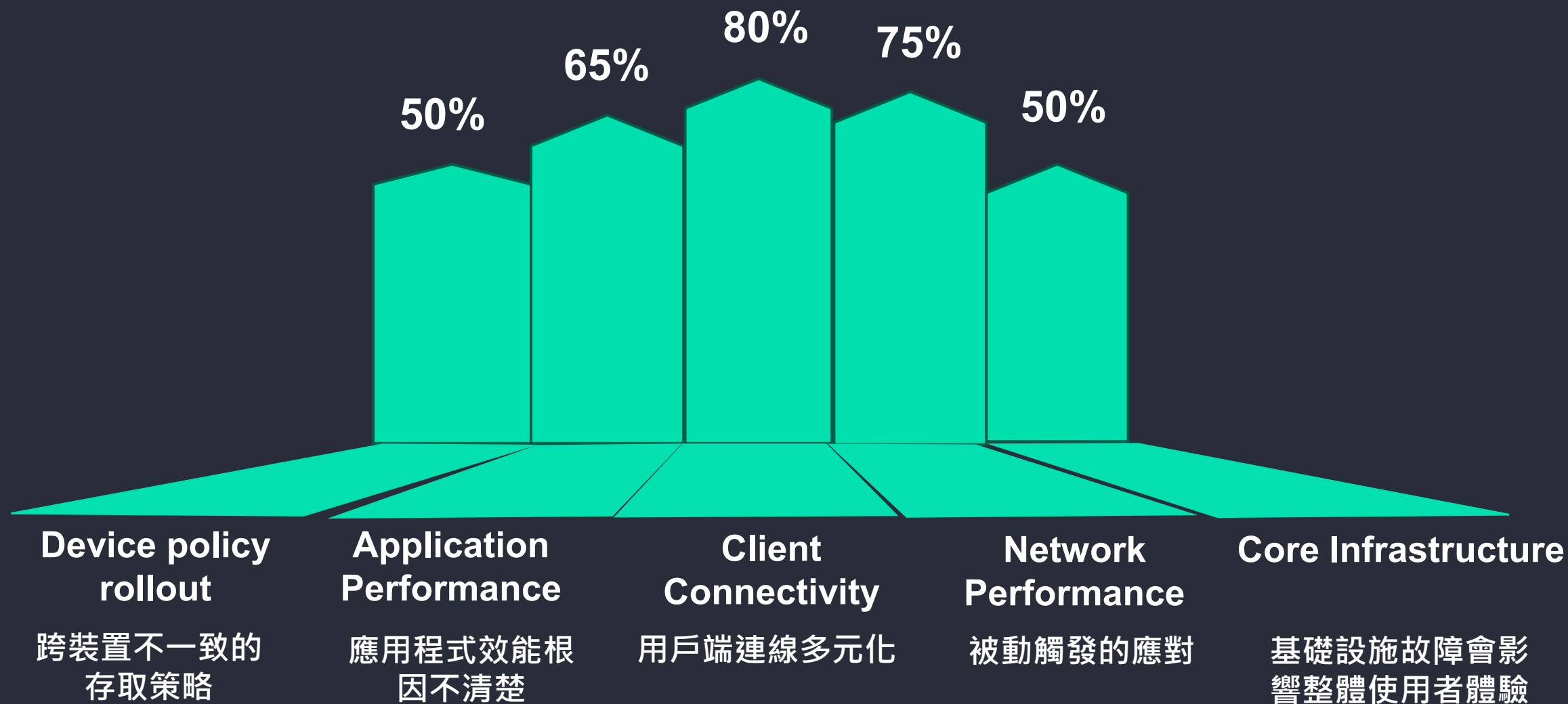
# 善用 HPE Aruba Networking Central 的 GenAI 智慧助理，讓網路管理更聰明

Alex Chen 陳清淵 副總經理, HPE 網路事業群

October 16, 2025



# The hardest-to-solve problems today



# What value do customers see

25  
%

網路效能的改進與優化

50  
%

節省運營管理成本

70  
%

減少誤報<sup>1</sup>，加速查修<sup>2</sup>

<sup>1</sup> [Gartner](#), Innovation Insight: AI Networking Has the Potential to Revolutionize Network Operations, Jonathan Forest, Andrew Lerner, Tim Zimmerman, May 15, 2023

<sup>2</sup> [Eastnets](#), Reducing false positives using contextual AI

# Move on from solving Network sucks problem

# Pain-points

- 傳統網路是被動的，依賴於人
- 警報太多，哪一個真正重要
- IT團隊面臨壓力，事半功倍



Bob

# Interesting data points

- 43% 的時間花在故障排除上
- 70%的網絡問題首先由用戶報告
- 企業每月收到 4000+ 個警報——85% 是noise



## CENTRAL: SELF-DRIVING SECURE AI-NATIVE NETWORKING

### AUTOMATE



Onboarding



Provisioning



Management  
and Orchestration



AIOps and  
Troubleshooting



Analytics and  
Optimization



Location

### AI and Automation

### PROTECT



Visibility



Authentication  
and Authorization



Micro-Segmentation



Continuous  
Monitoring



Network  
Access Control



Security  
Service Edge

### Zero Trust and SASE Security

### CONNECT



Wi-Fi



Switching



SD-WAN

5G

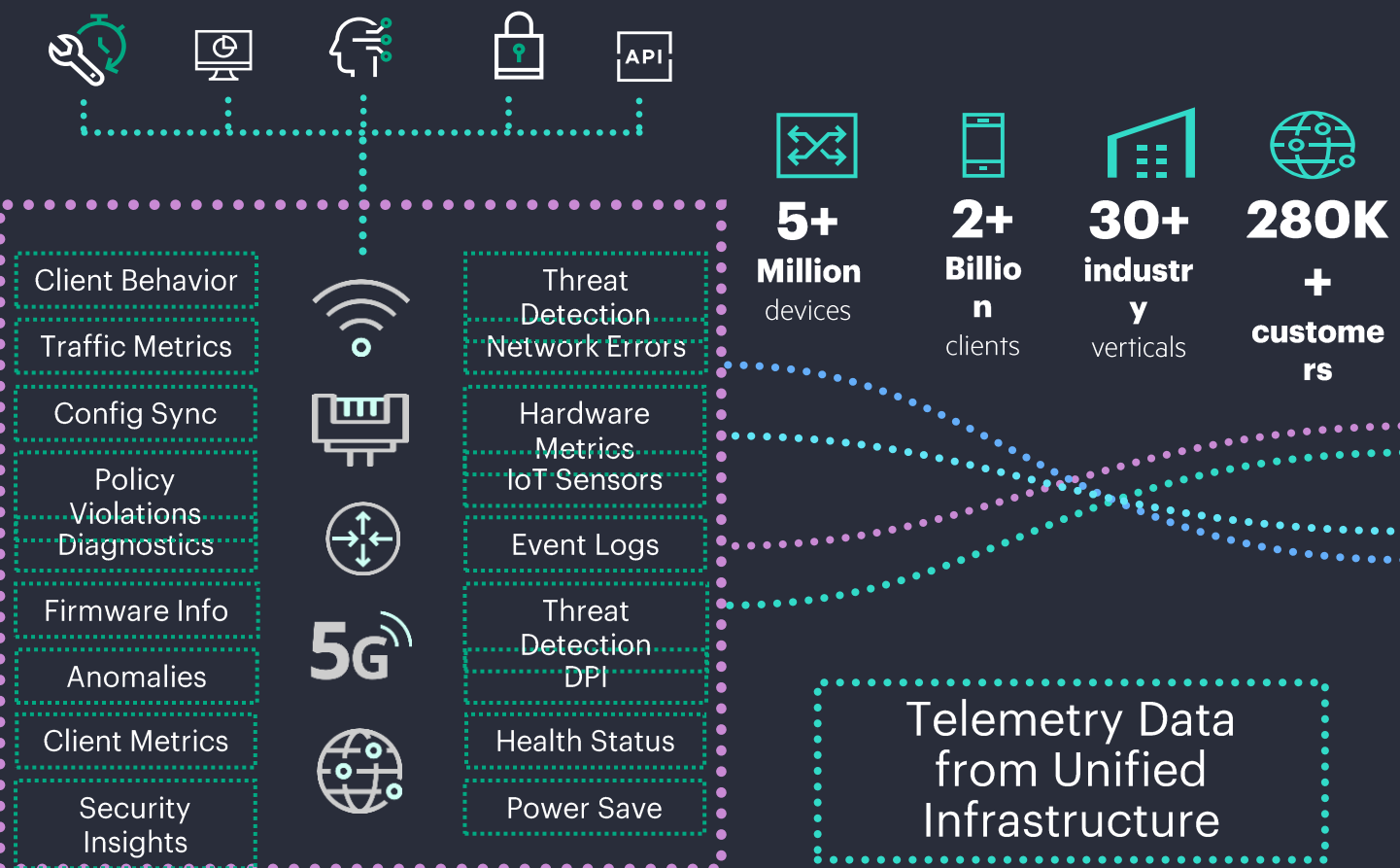
5G



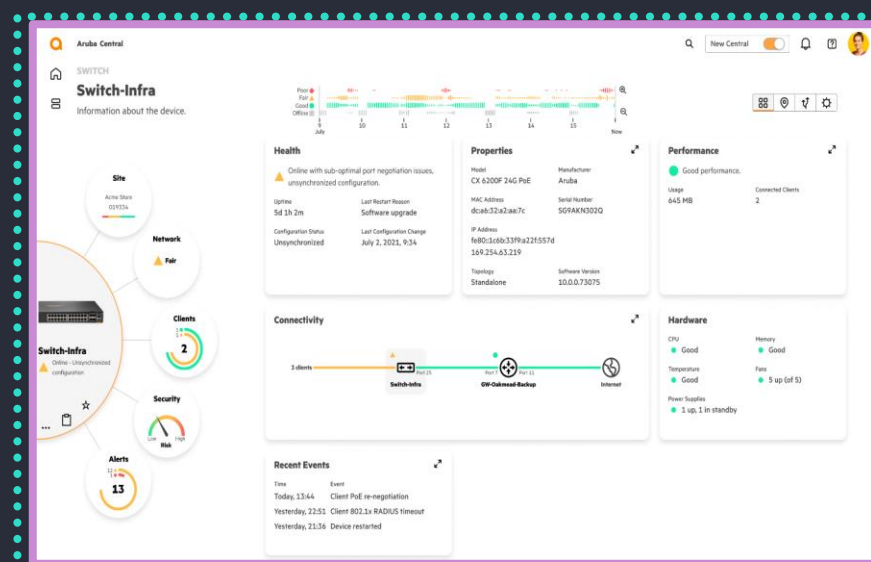
IoT

### Unified Infrastructure

# AI for networking starts with DATA



## AI-powered, operator-centric experience



遙測 **Telemetry** 允許即時監控網路流量、設備性能和應用程序行為。這種可見性有助於及時檢測異常、性能瓶頸或安全威脅，從而及時進行干預。



# Working smarter with 沒有幻覺的 AI

發現趨勢Trend  
和洞悉見解Insight



AI for Networking  
in Action

Receive  
Optimization tips

Power and constantly  
train AI/ML models

AI  
Search

Network  
Insights

AI  
Assist

Client  
Insights

Incident  
Detection

GenAI

Large language models (LLM)

Classification AI

Clustering, correlation, regressions...

GenAI-powered  
search

AI-powered  
Insights

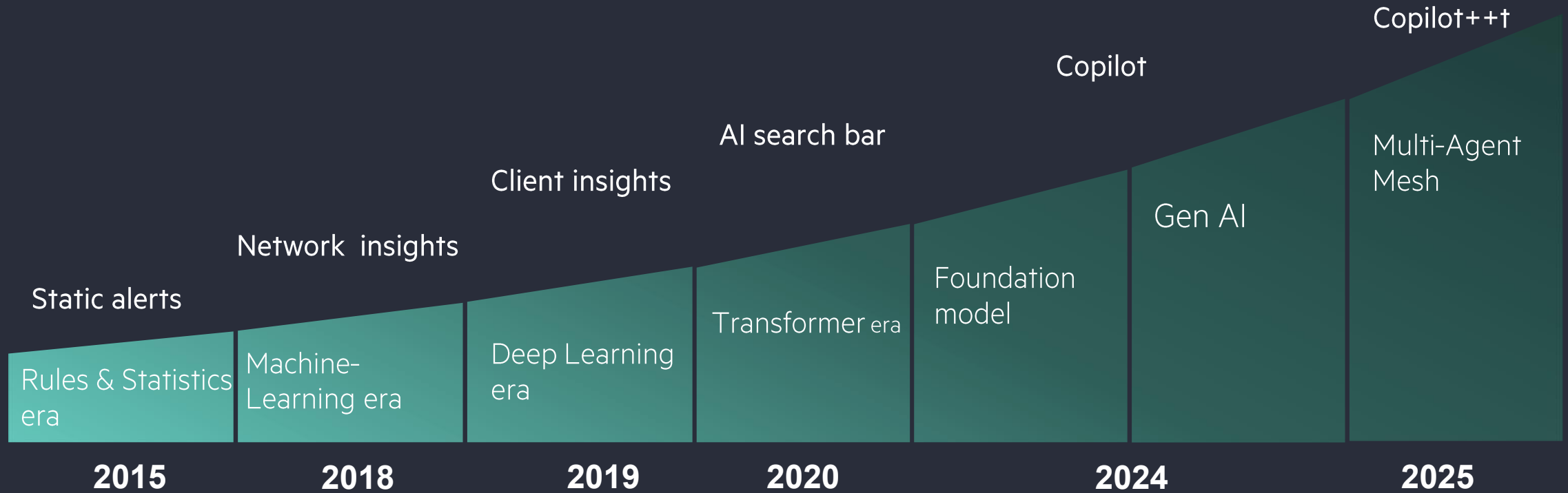
AI-driven  
assurance and  
alerts

Client Insights and Incident Detection

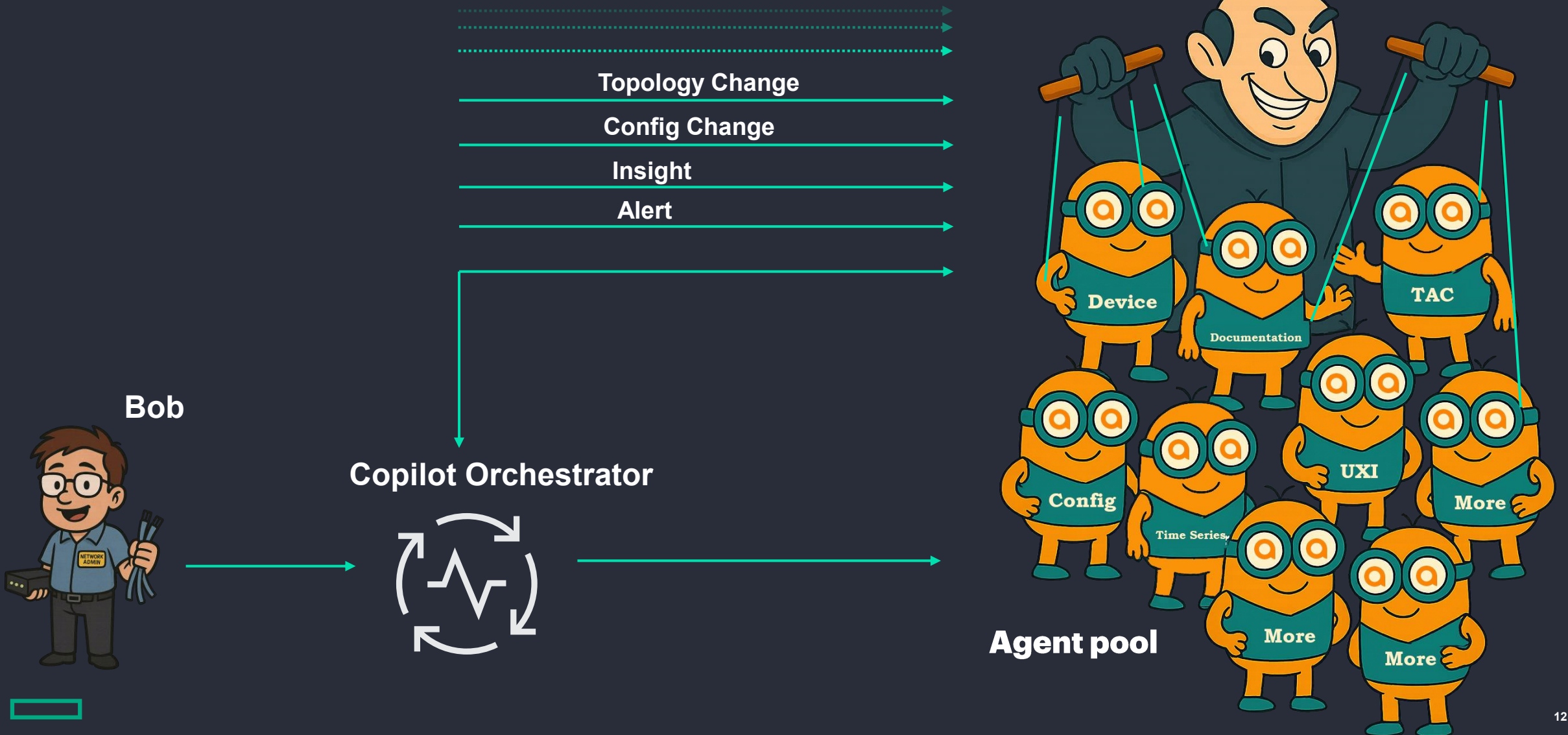
# Introducing Central Agentic AI

Powered by Multi-Agent AI

# Evolution of AI



# What changed with agentic AI





# Transform AI-powered Network Operations with New Agentic Mesh Technology

## Agentic AI: 4-step framework to problem solving



Agentic AI 的 LEM ( 大型體驗模型，**Large Experience Model** ) 在網路管理場景中主要負責感知、分析、預測以及優化終端體驗，包括無線連線品質、應用表現、IoT設備行為以及用戶的真實互動效能。

# Knowledge-base at your fingertips

Ask about how to do a task, best practices and product support documentation

# Demo #1

## Documentation Query

- **Show me how to map a VLAN between AP and the Gateway**
- **Summarize new features in AOS-10 release**

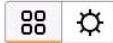


GLOBAL

## Network Overview



Access your network organization, configuration and operations from a single pane of glass.



### Sites

Sites by health.



#### Remote-Edge-To-Cloud

4 devices are offline.



#### Singapore CIC

High 2.4 GHz channel utilization impacted 1 device.



#### Santa Clara Outlet

3 devices are offline.



#### TechPlayGround-Singapore

DNS Server Failed to Resolve Domain on 1 wired client.



#### MicroBranch-Edge-To-Cloud

There are no devices in this site.



Updated every 2-5 min (08/31/2025, 9:24 PM)

### Alerts

Active alerts aggregated into categories.



Categories

Alerts

Client

0

Device

24

LAN

0

WLAN

1

Administration

0

### Device Health

Device type and its health.



Device Type

Health

Access Points 3 14

Switches 3 4

Gateways 2 5

### Insights

Recommendations for optimizing performance.



8

Insights

■ Wireless  
■ Wired  
■ Security

Insight

Sites

Access Point Firmware Recommendation

2

Switch Firmware Recommendation

2

Enable WPA3 for Better Security

1

Enable 6 GHz Radio with Optimal Bandwidth

1

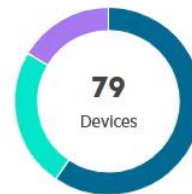
Wireless Client Onboarding Experience

1

3 more Insights

### Device Inventory

Device distribution and activities.



79

Devices

■ Access Points  
■ Switches  
■ Gateways

Require Site Assignment

50

Added in the Last 7 Days

0

### Licenses

License consumption across managed devices.

Foundation

Licenses

547

Advanced

1206

Other

30

■ Assigned ■ Available



# Converse with *your* network

# Demo #2

Know your Network

- **What you done and status**

Health Query

- **Summarize any switch health alerts**
- **Conversational Follow-ups**





## Networking Copilot



### Conversations



Roaming authentication failures on BLR...

List gateways and paths at Roseville site

Authentication Failures During Roaming

Resolving authentication failures during...

Roseville Site Gateway Cluster Connectivity

Resolve roaming issues for specific devices

Roseville Site Gateway Cluster Connectivity

Roseville Site Cluster Gateway Details

Roaming Authentication Failures Resolution

Roseville Site Gateway Connectivity



Hi, Divya

### Agentic-Mesh Actions

Client authentication failures during roaming affecting 46 mobile devices



Clients experiencing high latency due to restrictive bandwidth contracts.



### What's New in a Release

Summarize new features in **firmware AOS-10 release 10.7.2.0**



### How to Configure Your Network

Show me how to **map a VLAN between AP and the Gateway**



### Summarize Network-Related Queries

Which gateways are causing gateway joined cluster alert and **can you provide the connectivity path for it?**



### Trending Issues Reported to TAC

Are there any known roaming issues reported with **Spectralink devices?**



### Deep Data Questions

Enter a prompt here





## Networking Copilot

### Conversations



New Features In AOS-10.7.2.0 Firmware

Aruba Network VLAN Configuration Guide

AOS-10.7.2.0 new features

New features AOS-10 release 10.7.2.0

WIFI Network Health Assessment

New Features AOS-10 Release 10.7.2.0

New Features In AOS-10.7.2.0

New Features In AOS-10.7.2.0

Mapping VLANs In Aruba Network



Hi, Budhaditya

### Agentic-Mesh Actions



No pending actions

### What's New in a Release

Summarize new features in **firmware AOS-10 release 10.7.2.0**



### How to Configure Your Network

Show me how to **map a VLAN between AP and the Gateway**



### Summarize Network-Related Queries

Which gateways are causing gateway joined cluster alert and **can you provide the connectivity path for it?**



### Trending Issues Reported to TAC

Are there any known roaming issues reported with **Spectralink devices?**



### Deep Data Questions

Can you publish a **list of clients with SNR > 30 in the last 24**



Enter a prompt here





# Agentic AI reasons, root-causes, and remediates

# Demo #3

## Support Query

- **Are there known roaming issues with Spectralink devices?**
- **Application issue**



## Networking Copilot

### Conversations



Spectralink device roaming Issues In...

Summarize switch health alerts

New Features In AOS-10.7.2.0 Firmware

Aruba Network VLAN Configuration Guide

AOS-10.7.2.0 new features

New features AOS-10 release 10.7.2.0

WIFI Network Health Assessment

New Features AOS-10 Release 10.7.2.0

New Features In AOS-10.7.2.0

### Issue Summary

Based on the provided information, there are known roaming issues reported with **Spectralink devices** in Aruba network environments. The primary concerns involve **fast roaming capabilities**, **802.11r (Fast BSS Transition)** functionality, and **intermittent disconnections** during roaming events. Specific issues include:

1. Fast roaming capability information missing for clients on certain AP models (735 and 734) when 802.11r is enabled.
2. Spectralink 8440 phones experiencing association difficulties with AP-515 models, resulting in frequent disassociations.
3. Choppy voice quality and brief periods of unusability during roaming events for Spectralink 9540 phones.
4. Failed fast roaming attempts due to missing PMKR1 (Pairwise Master Key R1) on target APs.

These issues appear to affect various Aruba hardware and software versions, including AOS 8.x and AOS 10.x environments. The problems seem to be intermittent and can impact voice quality and overall device usability during roaming events.

### Conclusion

To troubleshoot and potentially resolve these Spectralink roaming issues, focus on gathering detailed information about the roaming process and client behavior. Start by examining the AP and client association status using `show ap association` and `show clients debug`. For AOS 10.x environments, also utilize `show ap debug client-table` to view detailed client information. To investigate authentication and key management issues, use `show auth-tracebuf` to review authentication traces. For AOS 8.x systems, `show datapath session verbose` can provide insights into client session details. Additionally, verify RADIUS server connectivity with `show aaa authentication-server radius` if 802.1x authentication is in use. These commands will help identify potential causes of the roaming problems and guide further troubleshooting efforts.

Is this helpful?



Enter a prompt here



## Networking Copilot

### Conversations



Current Conversation

SpectralLink device roaming Issues In...

Summarize switch health alerts

New Features In AOS-10.7.2.0 Firmware

Aruba Network VLAN Configuration Guide

AOS-10.7.2.0 new features

New features AOS-10 release 10.7.2.0

WIFI Network Health Assessment

New Features AOS-10 Release 10.7.2.0

Is there any application latency Issues

#### Thinking • •

**Step 1:** Using SearchAgent to answer user query

**Step 2:** I'll check for application latency Issues across the network.

**Step 3:** No applications with latency Issues were found. Let me check if there are any active alerts related to application performance.

**Step 4:** Let me check if there are any applications being used on the network that I can analyze for latency Issues.

**Step 5:** I see there are applications in use, but no reported latency Issues. Let me check one of the top applications to see if there's any latency data available.

**Step 6:** Let me try another application:

**Step 7:** Let me check if there are any site-wide performance Issues that might be affecting applications:

**Step 8:** Let me check another site to see if there are any application latency Issues there:

**Step 9:** Let me check one more site:

**Step 10:** Let me check if there are any clients experiencing poor application performance:

Enter a prompt here







## Networking Copilot

### Conversations



Summarize switch health alerts

New Features In AOS-10.7.2.0 Firmware

Aruba Network VLAN Configuration Guide

AOS-10.7.2.0 new features

New features AOS-10 release 10.7.2.0

WIFI Network Health Assessment

New Features AOS-10 Release 10.7.2.0

New Features In AOS-10.7.2.0

New Features In AOS-10.7.2.0



Hi, Budhaditya

### Agentic-Mesh Actions



No pending actions

### What's New in a Release

Summarize new features In **firmware AOS-10 release 10.7.2.0**



### How to Configure Your Network

Show me how to **map a VLAN between AP and the Gateway**



### Summarize Network-Related Queries

Which gateways are causing gateway joined cluster alert and **can you provide the connectivity path for it?**



### Trending Issues Reported to TAC

Are there any known roaming Issues reported with **Spectralink devices?**



### Deep Data Questions

Can you publish a **list of clients with SNR > 30 in the last 24**



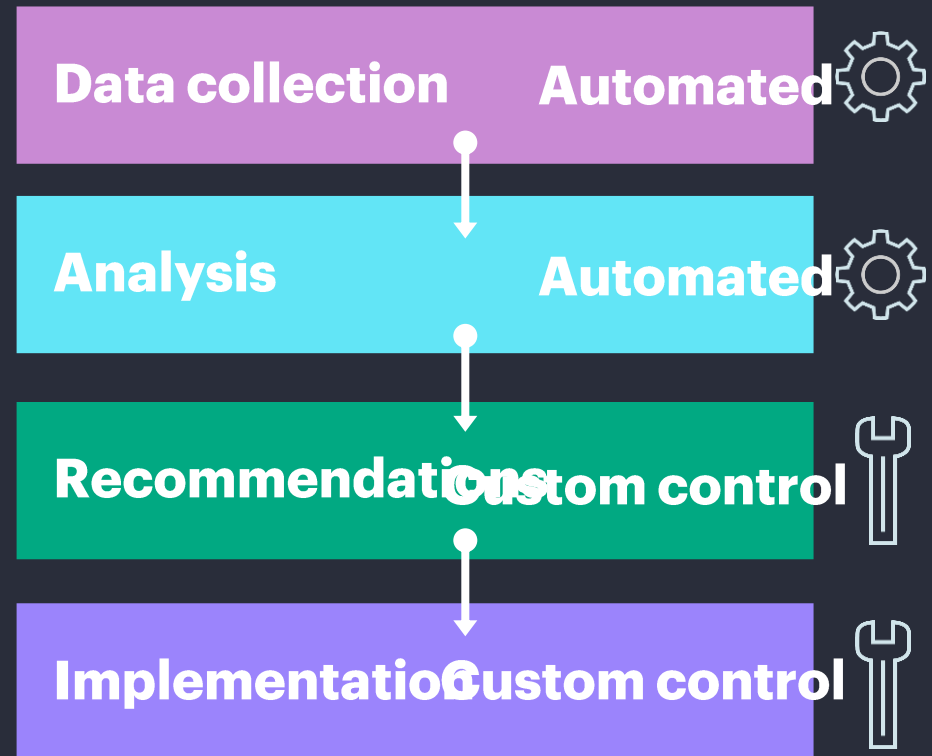
Enter a prompt here



# Our approach to Security-first, AI-powered networking



Automated, with **your control**



# 辨識分類、行為分析、異常偵測與大規模動態策略部署

**Crowd-sourced  
classification**  
透過網路平台分類資料

**Behavior analysis**  
行為分析

**Network anomaly  
detection**  
偵測不正常流量

**Policy recommendations**  
AI 系統會自動生成策略建議

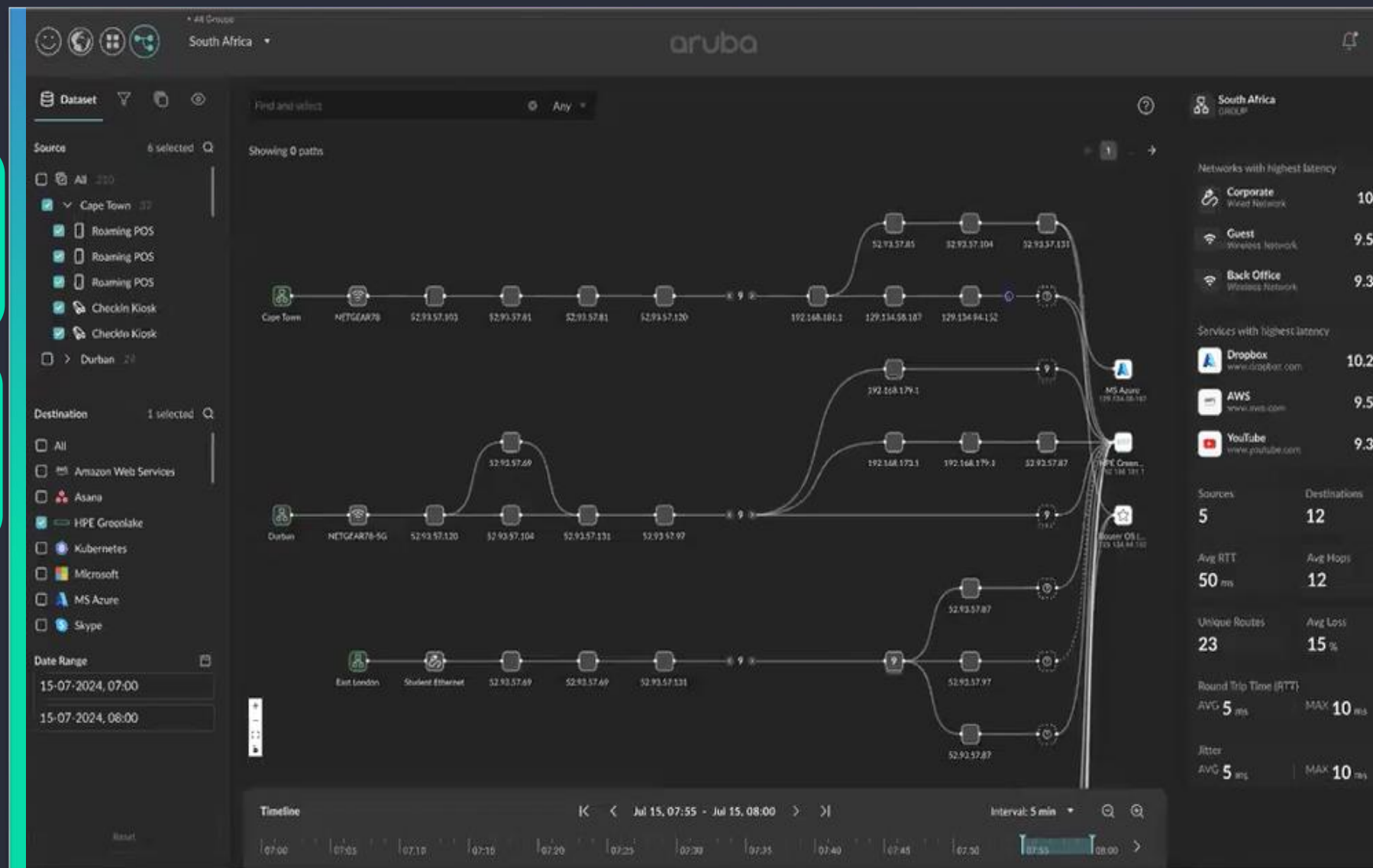
The screenshot displays the HPE Aruba Central NAC configuration interface. The left sidebar shows the 'Global' view. The main content area is titled 'Central NAC' and 'Manage network access control configuration'. It shows a list of authorization policies under the 'Configuration' tab. The selected policy is 'cameras', which is described as 'control our IoT cameras with a restricted Role'. The 'Conditions' section shows three criteria: 'Authentication Type' is equal to 'MPSK', 'Authentication Source' is equal to 'MAC Address Store', and 'Client Tags' contains any 'Abnormal Data Upload'. The 'Actions' section shows 'Deny Access' selected. The 'Save' button is visible at the bottom right.

Name	Conditions
1 Corporate users all the policies relating to the corporate users	
3 uncompliant employees employees who do not have compliant...	2
4 unmanaged employees employees who are not managed with...	1
5 cameras control our IoT cameras with a...	2
6 generic IoT where to put our IoTs until we figure...	1
7 generic registered devices	1
8 generic MAB putting all the MAB devices on intrane...	1
9 Deny All	0
2 Deny All Default deny for unauthorized requests	

# 應用程式效能驗證與可視性

使用者與應用體驗的  
整合視圖

透過網路路徑追蹤以  
實現全方位可視化

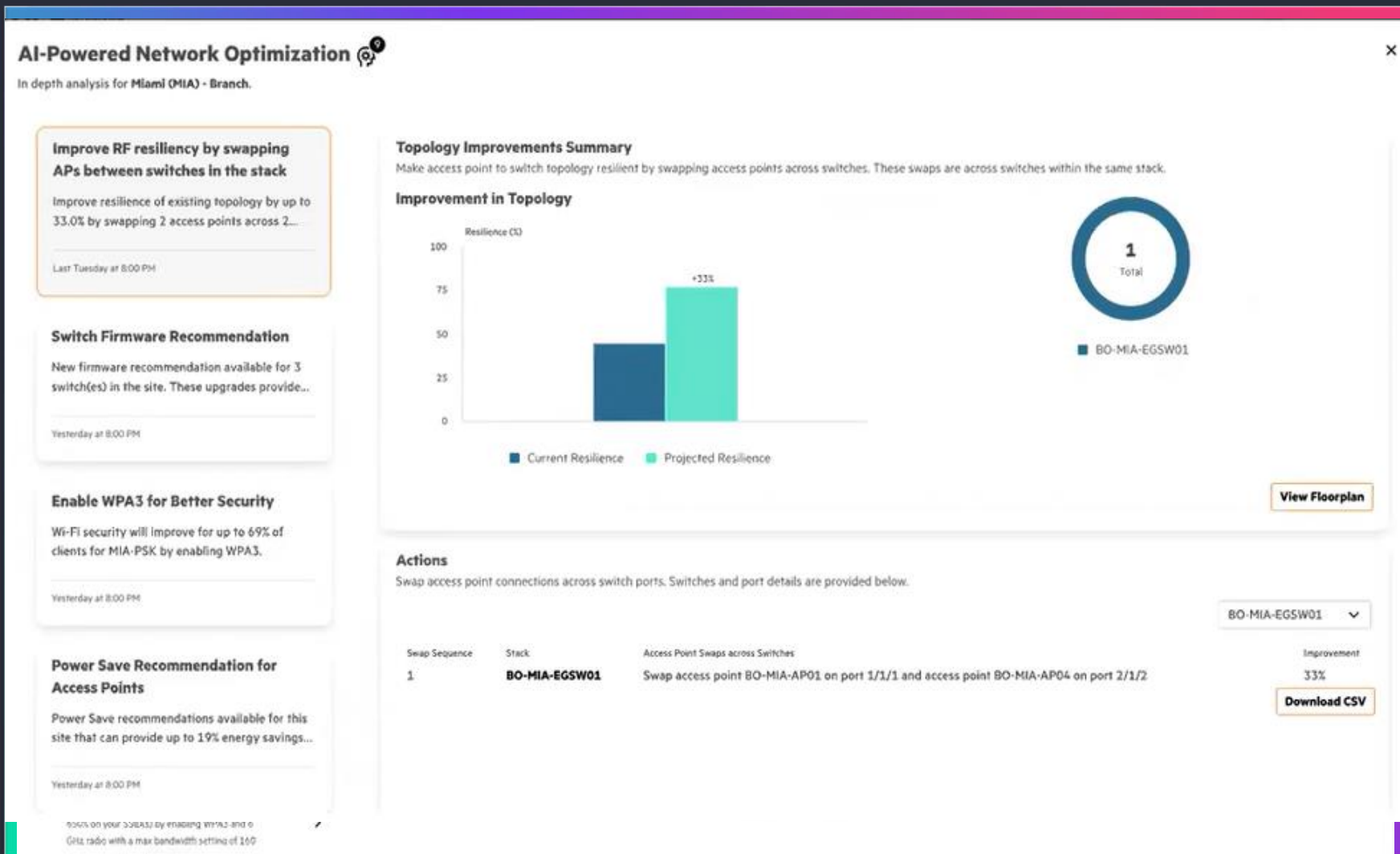


# 主動式網路優化

提前洞察、預先防範，  
讓網路在各領域都保  
持最佳狀態

提早發現 Wi-Fi 弱點，  
主動優化確保全區穩  
定連線

強化網路韌性，全面  
提升有線連線效能





## SUMMARY: HPE NETWORKING HELPS YOU WITH

效能優化

---

較佳的使用者體驗

---

工作效率提升

---

增強資訊安全

---

減少停機時間

---

利用人工智慧，事半功倍

---

快速找的真因

---

使用者行為與預測分析

---



# Thank You

