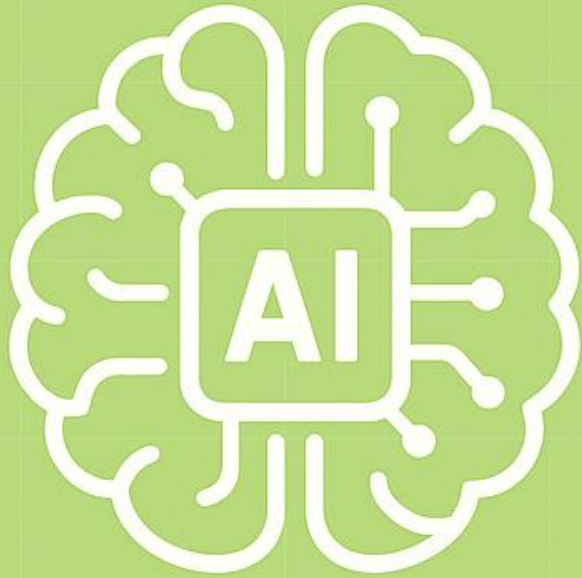


以 AI、混合雲與網路技術，驅動企業 IT 現代化

Gary Huang, Senior Solution Manager

October 16, 2025

Unlock value across your connected enterprise



+



+



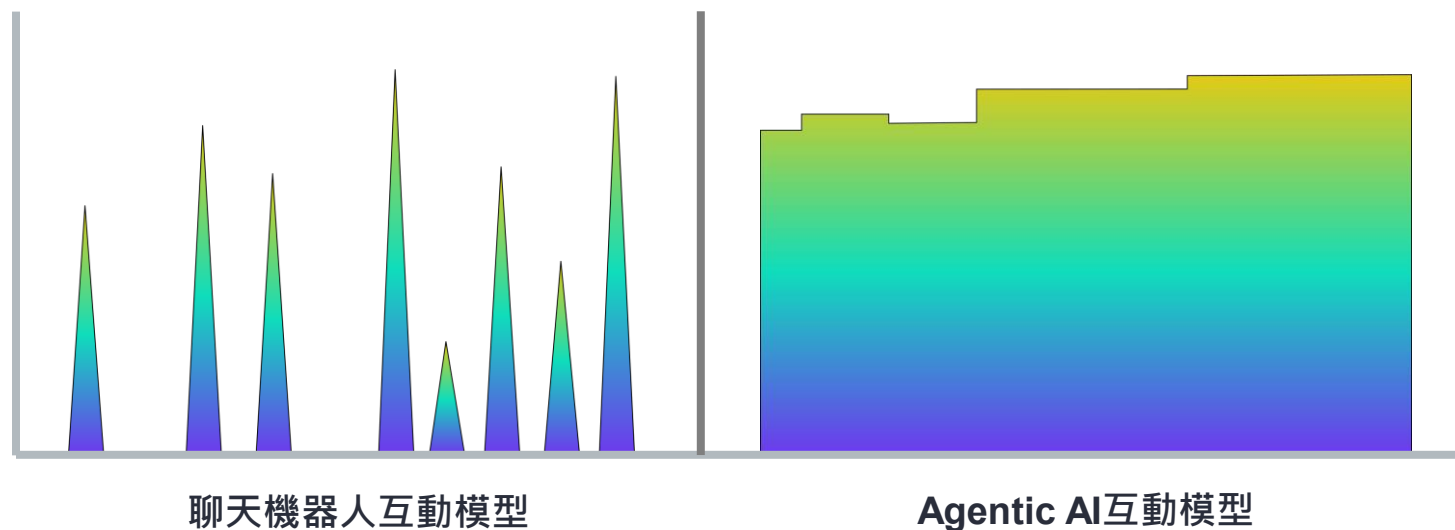
AI

Networking

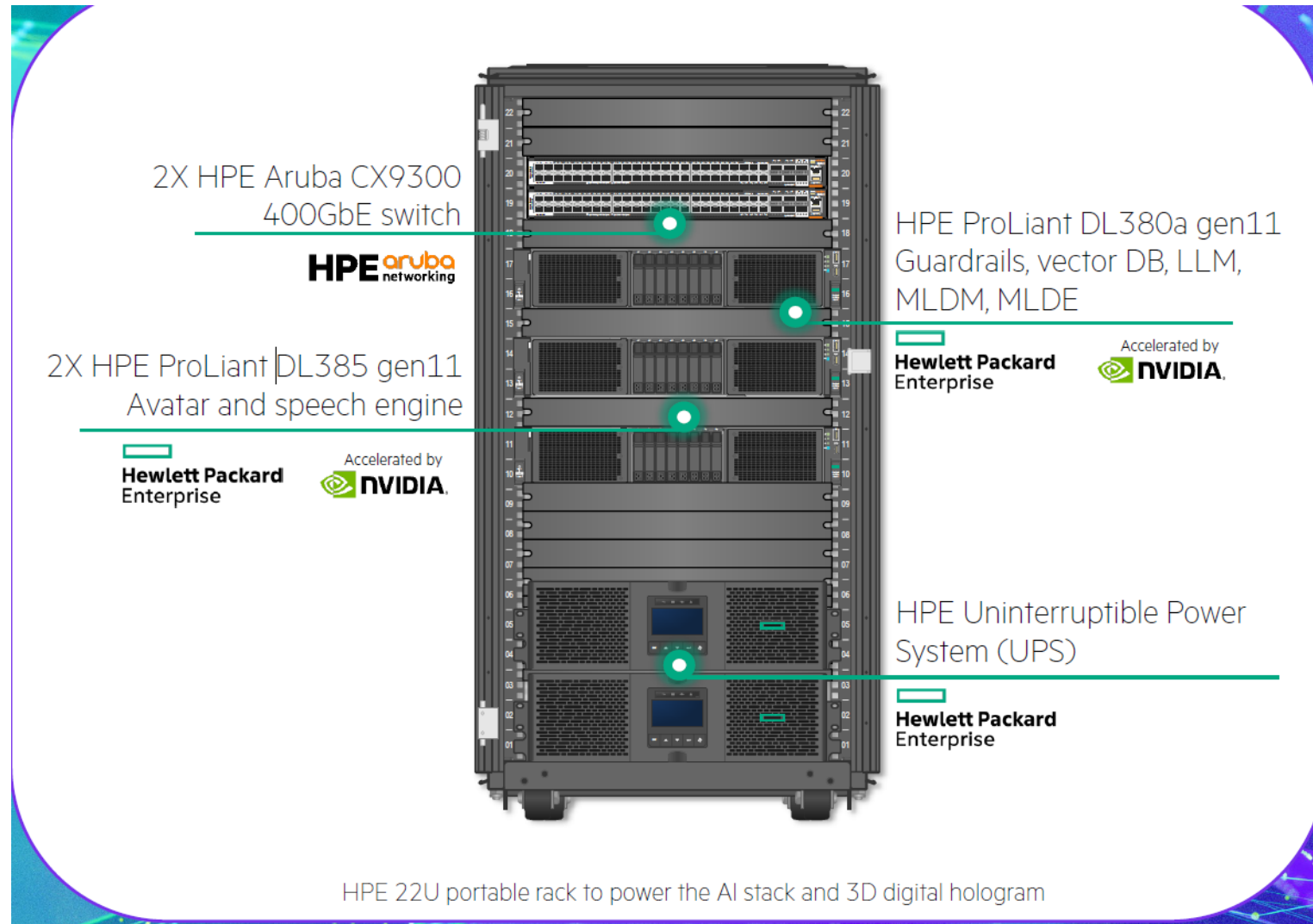
“AI is driving
fundamental
architectural
shifts”

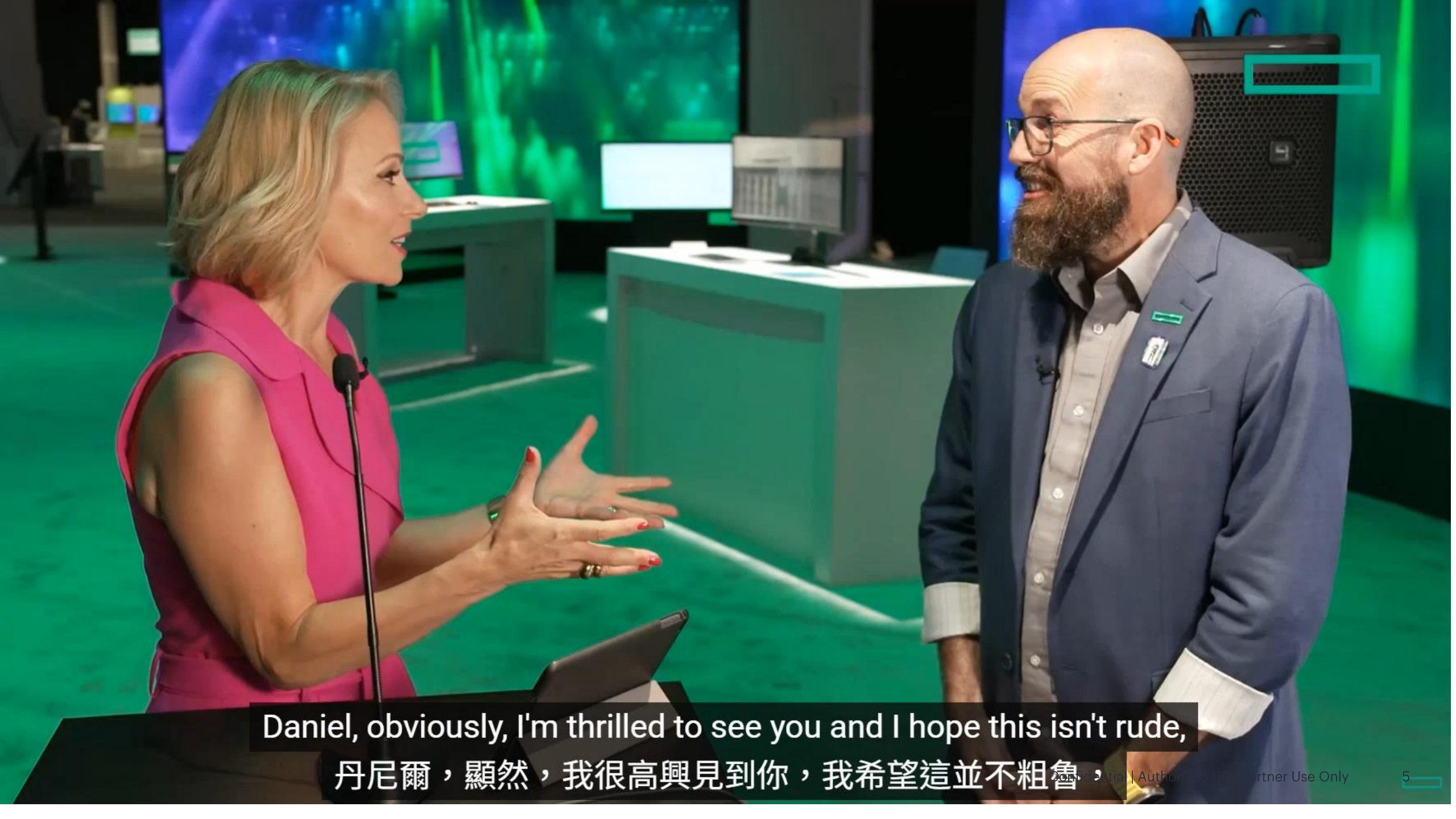
而“**Agentic AI**”正在將
推理需求從零星轉變為
持續。

推理需求



Antonia Nearly – a live example of Inference AI Solution



A woman with blonde hair, wearing a bright pink sleeveless dress, is speaking into a microphone. She is gesturing with her hands. A man with a beard and glasses, wearing a blue blazer over a light-colored shirt, is listening to her. They are on a stage with a green and blue background. There are computer monitors and a large speaker in the background.

Daniel, obviously, I'm thrilled to see you and I hope this isn't rude,

丹尼爾，顯然，我很高興見到你，我希望這並不粗魯，


Avoid an Infrastructure Bottleneck

If the network is a bottleneck that delays training job completion, expensive GPU time is wasted, and training becomes network-bound instead of compute-bound

HPE Networking Mission for AI Data Centers

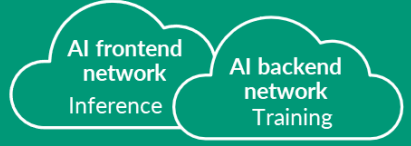
Unlocking the full potential of AI with unparalleled network performance and ease of operations

8 x GPU server



\$350K +

Small AI cluster



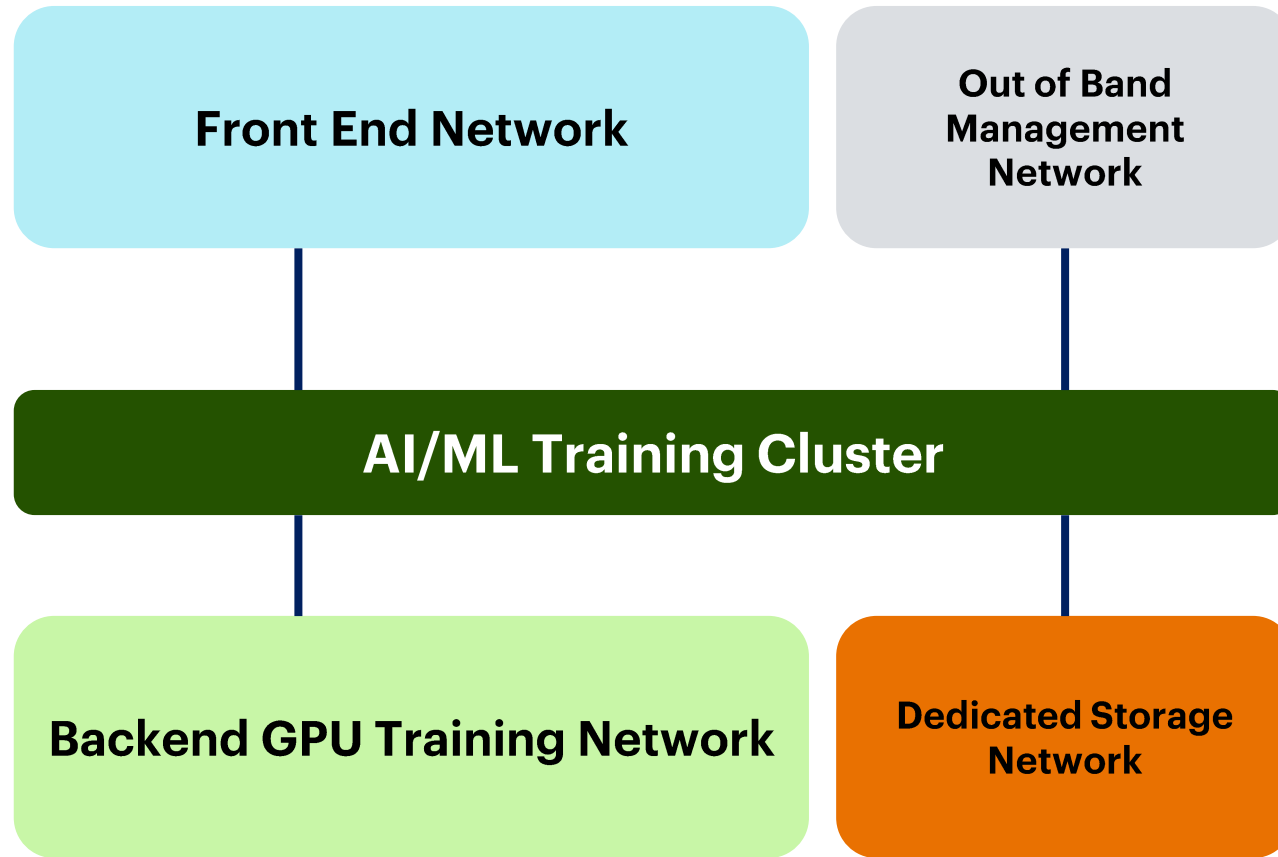
\$5M-10M

GPUs represent the bulk of the CapEx investment



The network connects GPUs in distributed training

AI / ML Training Infra: Networks Requirements



Front End Network Requirements

- 100G/200G to Host
- Gateway for external access
- Multi Tenancy

Backend GPU Network Requirements

- 200G/400G to each GPU
- Congestion Avoidance (1:1 non-blocking, Advanced Load Balancing) to handle elephant flows
- Congestion Management (DCQCN)

Backend Storage Network Requirements

- 100G/200G to Host
- Congestion Management

There are typically 4 networks in an AI training cluster. Each has unique requirements

HPE Networking Core Differentiators



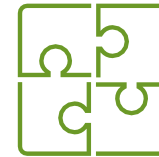
Openness

To avoid vendor
lock-in



Operations

“Power is nothing
without control”



End to End Solutions

Focus on customer
outcomes

Open Ethernet offer best TCO with performance



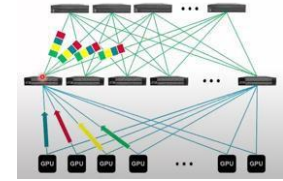
InfiniBand

Propriety Mellanox NICs and Switches



AI Optimized Ethernet

Shallow Buffer, Deep Buffer
across leaf and spine



Scheduled Fabric

Cell or Ethernet-based
disaggregated chassis

Vendor Lock-In

Yes

No

Yes

Operational
Consistency

No

Yes

No

Cost

Higher

Lower

Higher

Scale

Central/Limited

Distributed/Higher

Central/Limited

Performance
for AI workloads

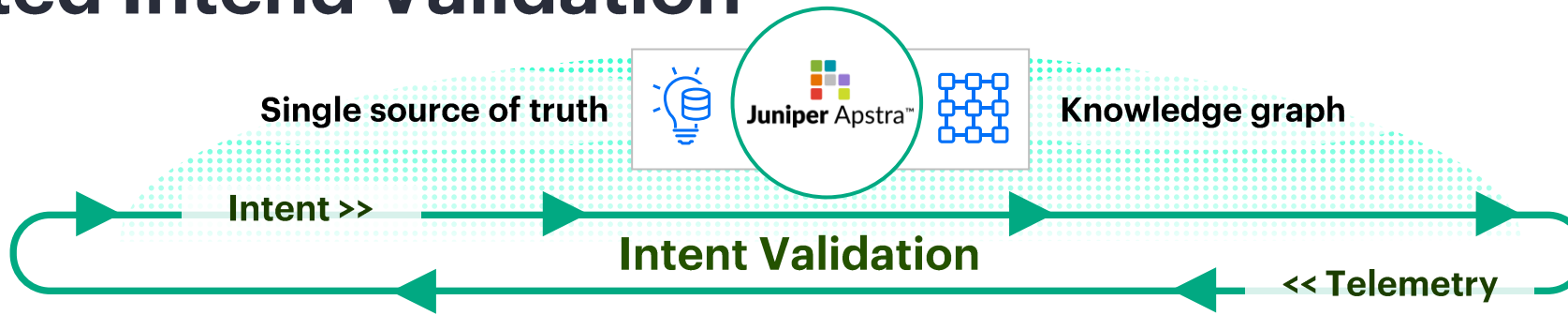
Yes

Yes

Yes



Operations: Apstra Data Center Director Automated Intend Validation



Design

- Vendor-agnostic
- Multiple fabrics
- Multiple pods, racks, servers
- DC & DCI EVPN-VXLAN/IP



Build

- Vendor-specific blueprints
- Render cabling plan
- App/service modelling
- Architecture validations



Deploy

- Easy network ZTP/configs
- Time voyager rollback
- Upgrade/maintenance mode
- Fabric multi-tenancy



Operate

- Continuous validation
- Root-cause identification
- Service-level monitoring
- Recommendation engine

Day0

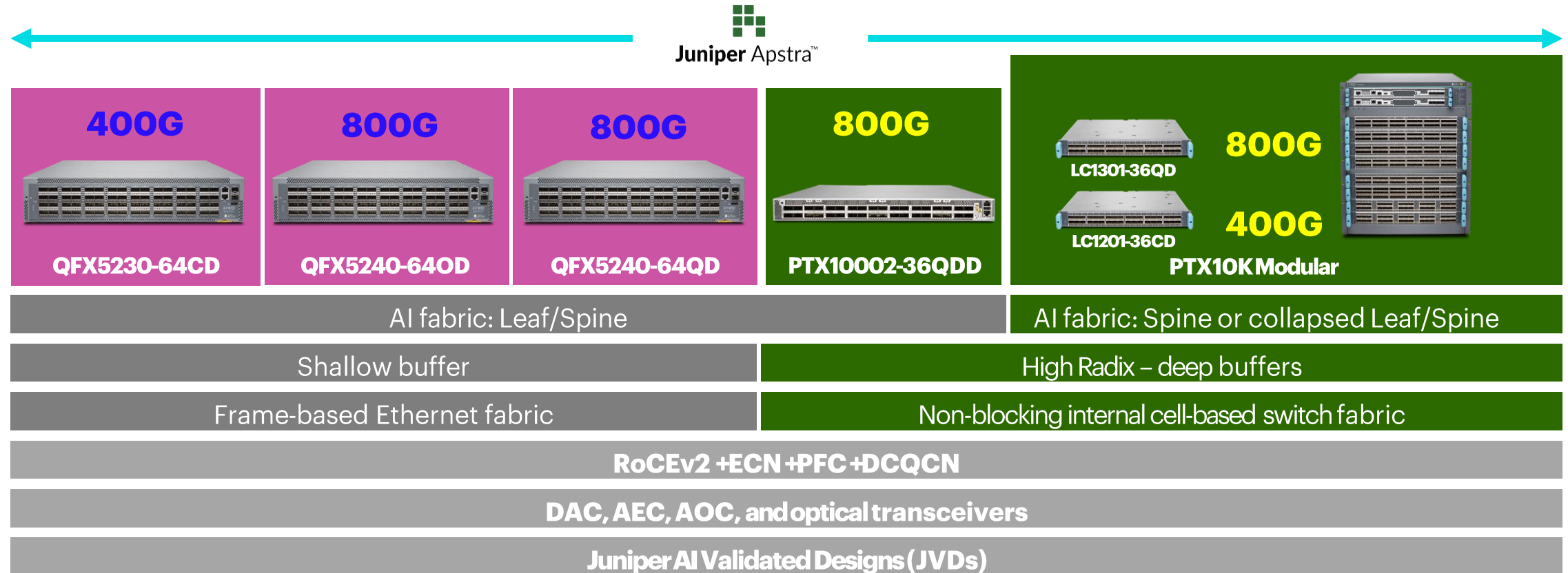
Day1

Day2

DayN

End to End Solutions: Comprehensive Spine-Leaf Portfolio for AI DC @800G

Capacity and scale to outpace model parameter and AI cluster growth



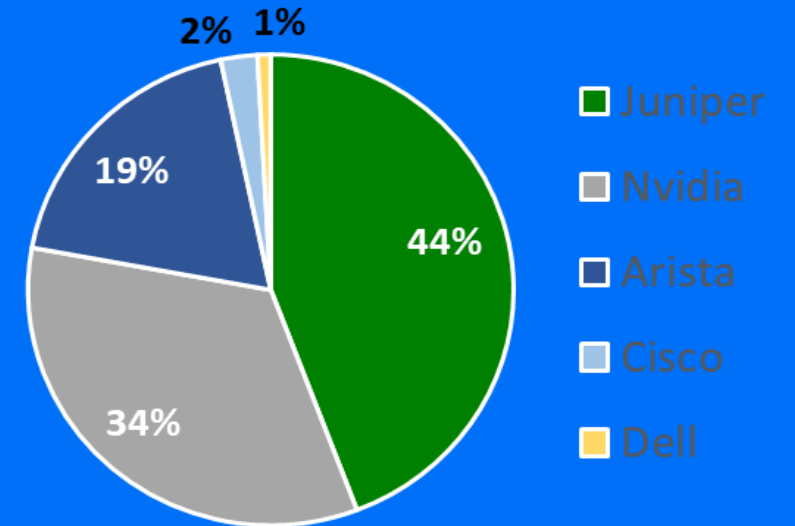
Juniper Apstra™

JUNOS
EVOLVED

HPE Networking is the Market Leader in 800GE

- **High Bandwidth & Low Latency in the AI DC**
 - Juniper holds 44% Market share in the AI DC (800GE)
- **Juniper Validated Designs w/ the AI Infrastructure Ecosystem**
 - Nvidia, AMD, Vast Data, Weka, Broadcom
 - Ops4AI lab for white glove service
 - Juniper AI Test-Labs in Sunnyvale is open to all customers
- **Wide Range of AI Customer Deployments**
 - Large Enterprise
 - Cloud Providers
 - Government Agencies

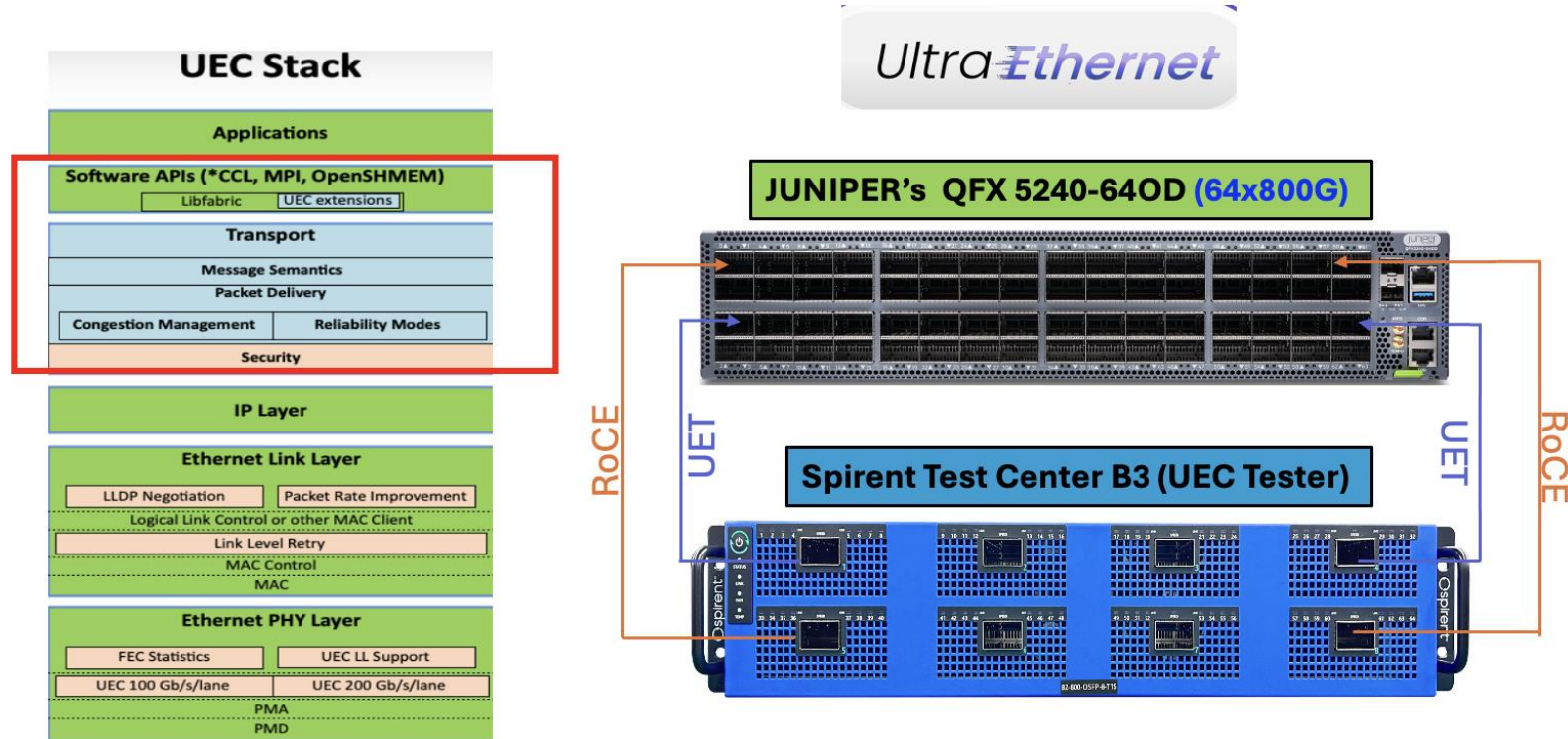
800GbE OEM Market Share, 2024



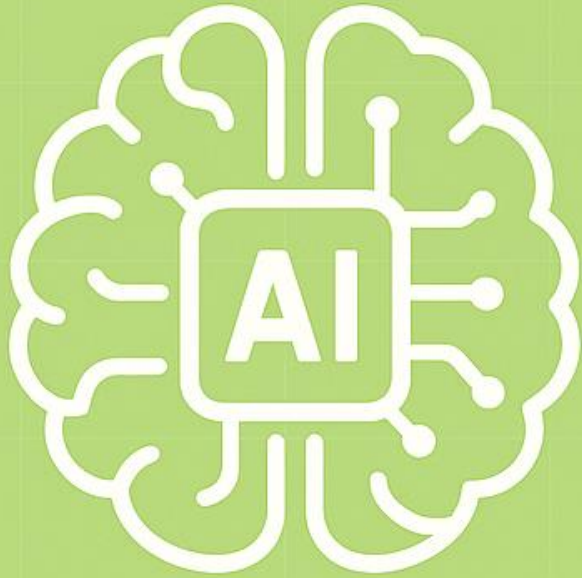
Source: 650 Group, March 2025

Tokyo Interop 2025 – AI Data Center

World's first Ultra Ethernet Transport (UET) Test Solution



Unlock value across your connected enterprise



+



+



**Hybrid
cloud**

Networking

Today's Realities Are Paralyzing Virtually Every Enterprise

**3 to 5x
cost increase**

due to lock-in, forced
bundling, and VM sprawl

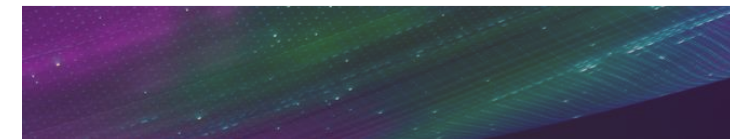
**Forcing new
strategic plans**

need to support current
workloads and new runtimes

**Causing more
complexity**

more apps, more formats,
more places... same team

“I’m evaluating options, but it will take 2 years to deal with VMware while I also adjust our container strategy, figure out AI, and re-evaluate public cloud, Oh yeah... and I’m not getting any new people to help.”

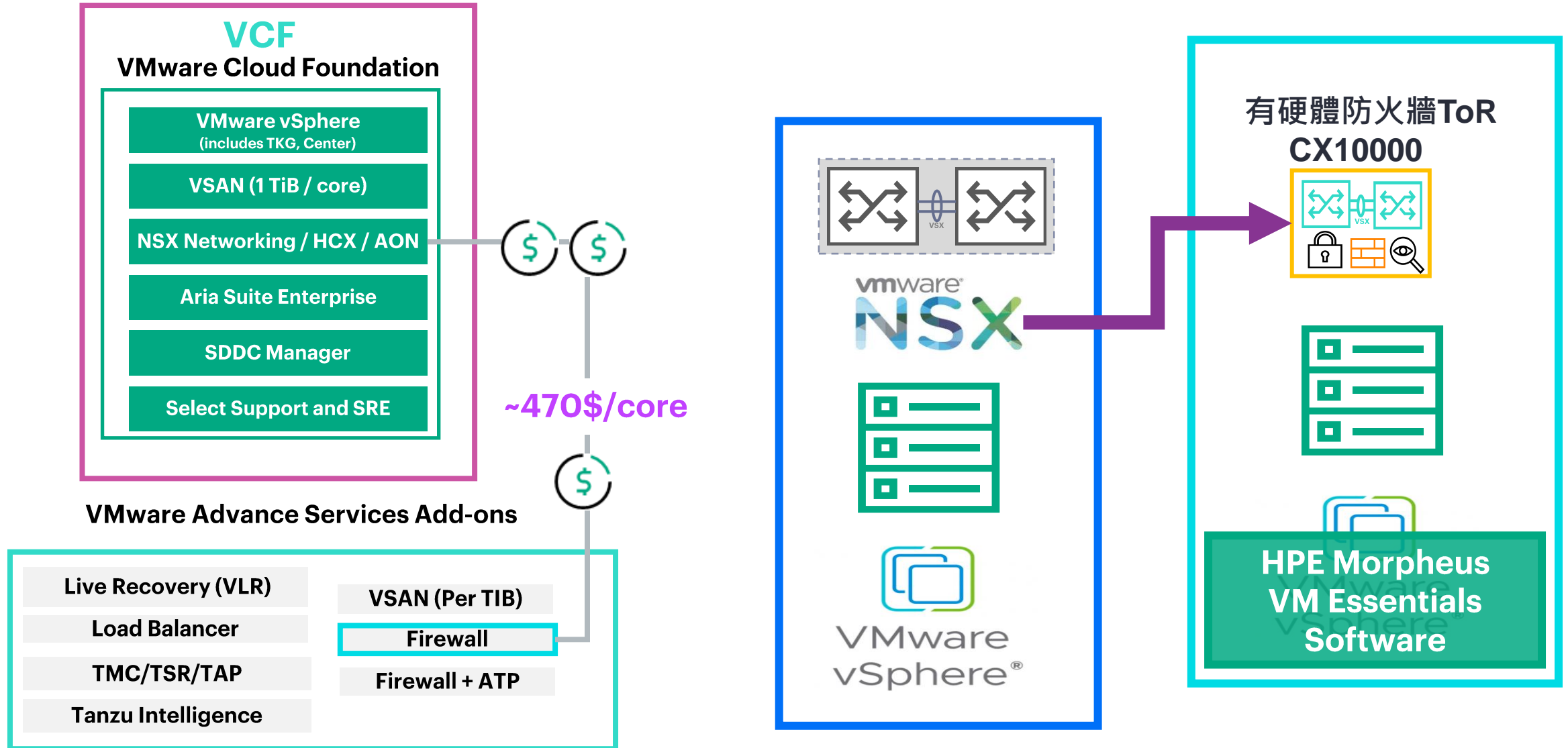




Optimise

to reduce the costs of established virtualization deployments and enable focus on what's next

Alternative to VMware NSX Firewall Service



HPE Aruba Networking CX 10000 Series

Leading the 4th Generation Data Center

**Industry-First Leadership in
Distributed Services Switch –
2022**

**25G/100G
800G L4 Firewall**



**Products of the YEAR
2022**

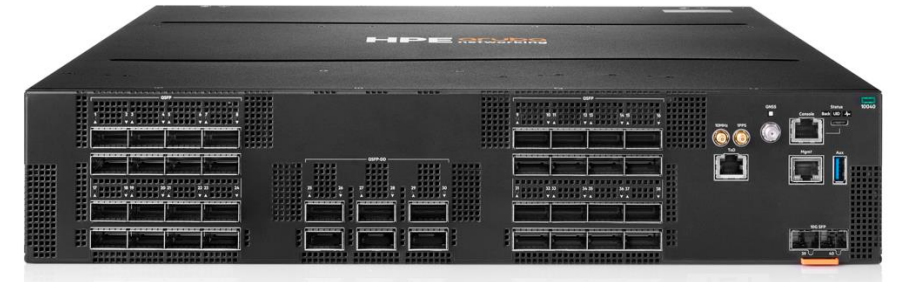
HPE aruba
networking



**Higher Speed, Scale, &
Performance
Improved Security and
Enhanced Features**

**Industry Leading
Distributed Services Switch –
2025**

**100G/400G
1.6T L4 Firewall**

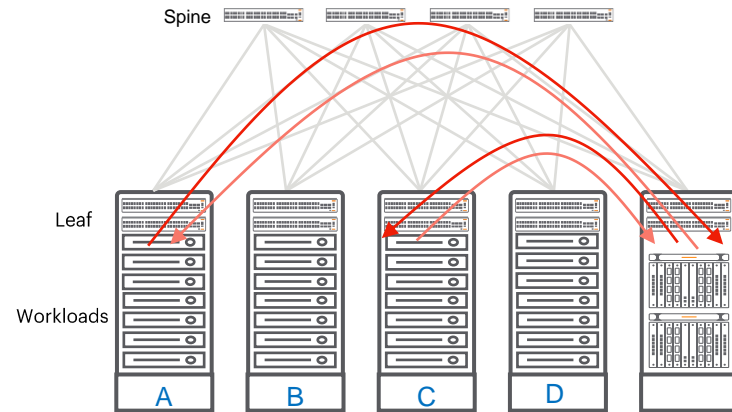


Traditional Approaches to Securing East-West Traffic

Versus a more modern approach

3rd generation

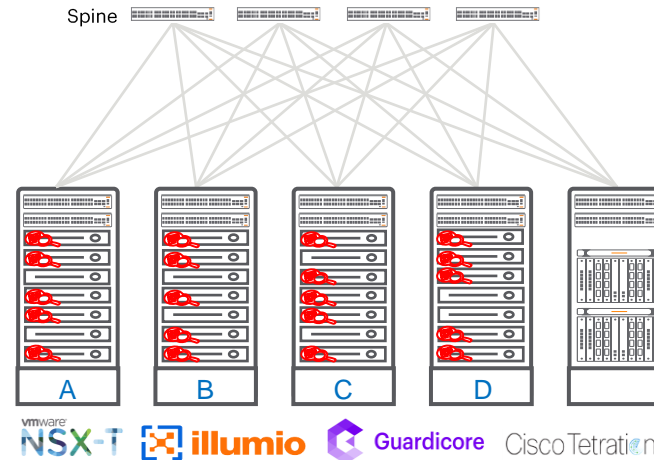
Centralized Services Model



Issues with Centralized Services Model:

- Limited protection and visibility (Zone based)
- Inefficient use of bandwidth and increased latency
- Application performance issues and scaling complexities
- Very expensive – Priced a 1.6Tb FW lately?

Software Agent Model

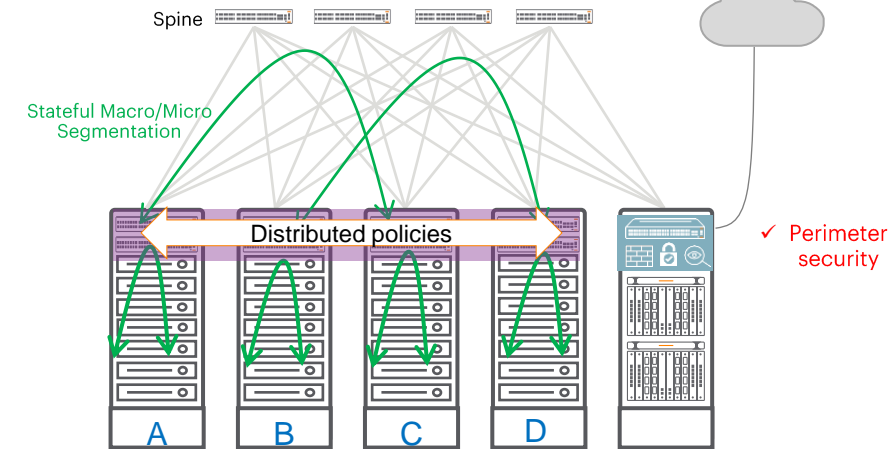


Issues with Software Agent Model:

- Complex to deploy and operate
- Deployment limitations lead to inconsistent visibility
- Consumes x86 resources - 10-30%
- Exceedingly high licensing cost.

4th generation

CX10K Distributed Services Model



Distributed Architecture advantages:

- Integrated 1.6Tb stateful F/W in every rack
- Workload agnostic
- Improved traffic flows & application performance
- Reduces complexity by managing less
- Significantly reduces costs

Why high-resolution telemetry is essential for today's modern enterprises



Manual, complex, poor reliability, unsafe

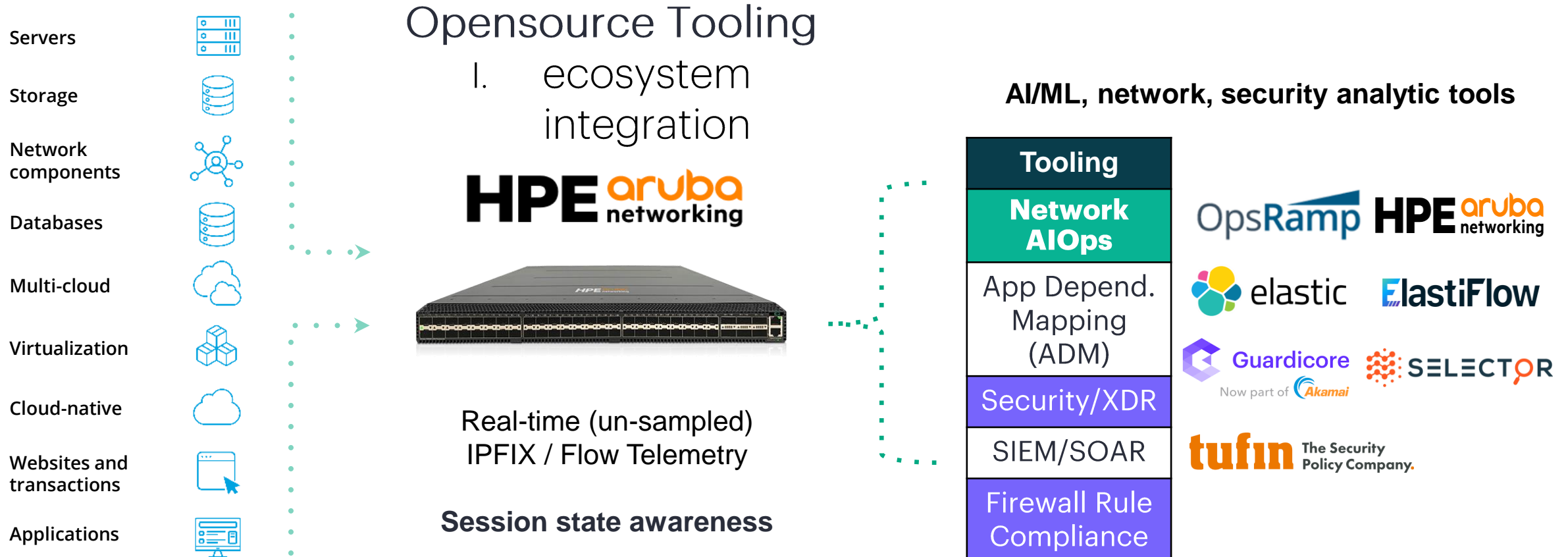
Traditional NPU tools, sampling and monitoring



Automated, performant, reliable and safe

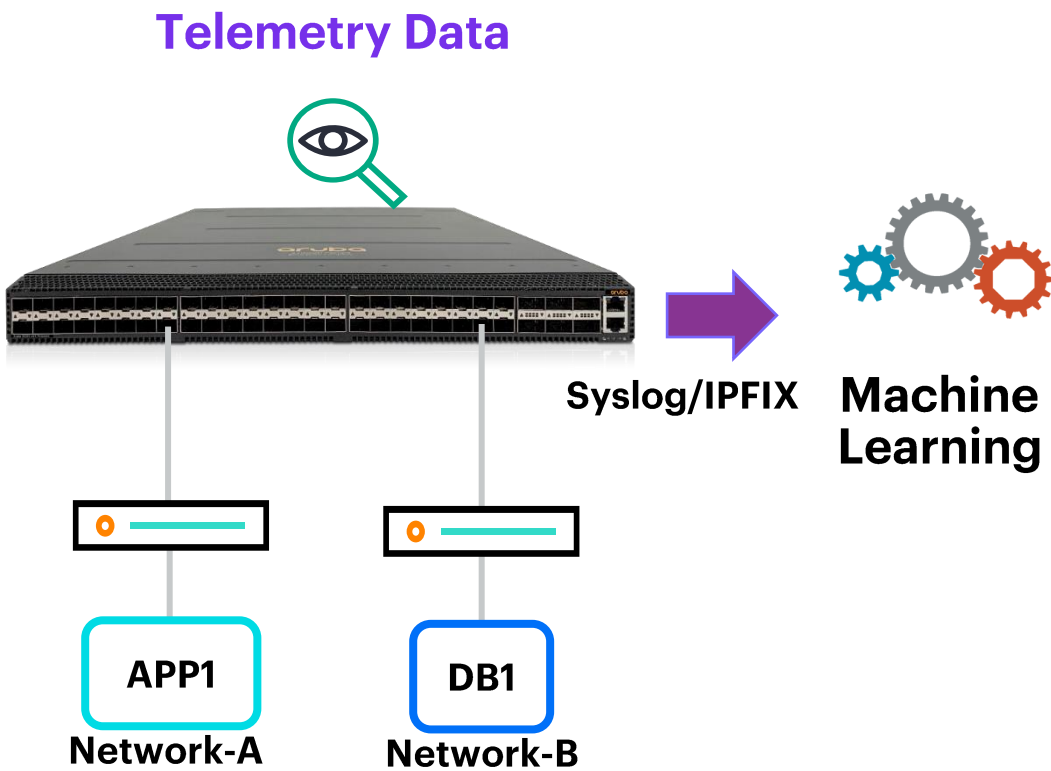
4th Gen NPU/GPU distributed services architecture

High resolution telemetry is imperative for automation, AIOps and security

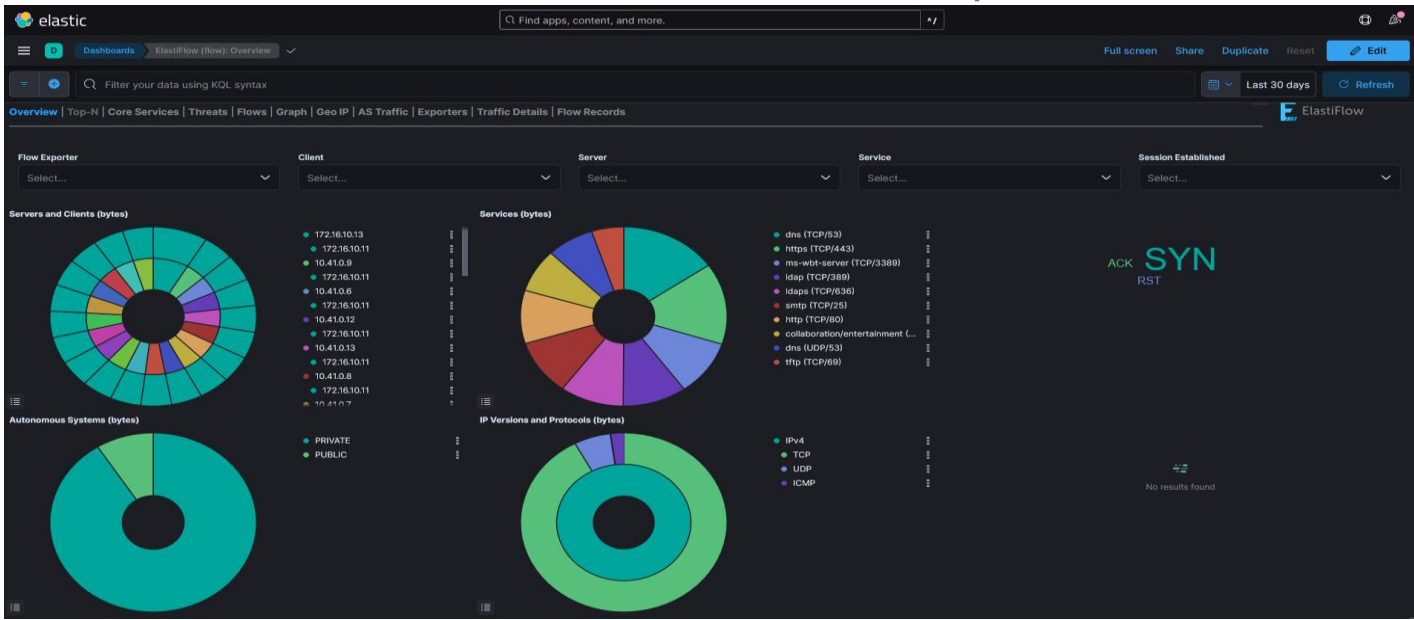


High-resolution telemetry → Actionable insights, predictability, automation

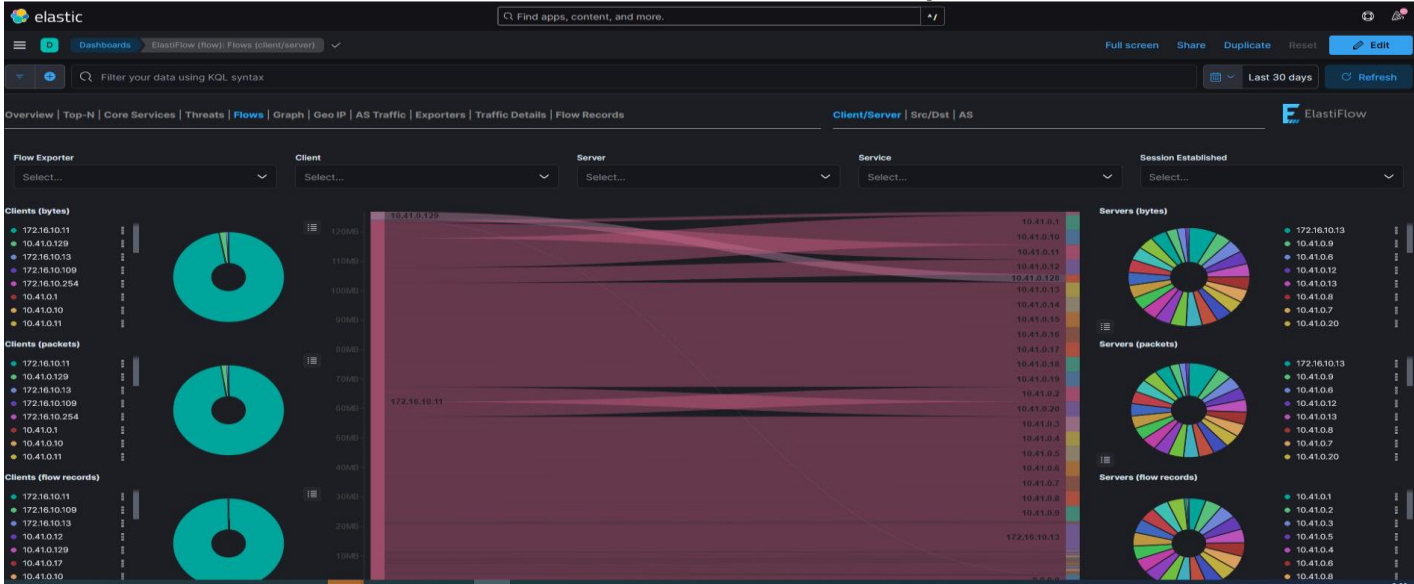
Total Visibility



ELK: Overview of the Traffic Visibility



ELK: Client & Server Traffic Visibility



SecOps

Telemetry Data



Syslog/IPFIX



Machine Learning



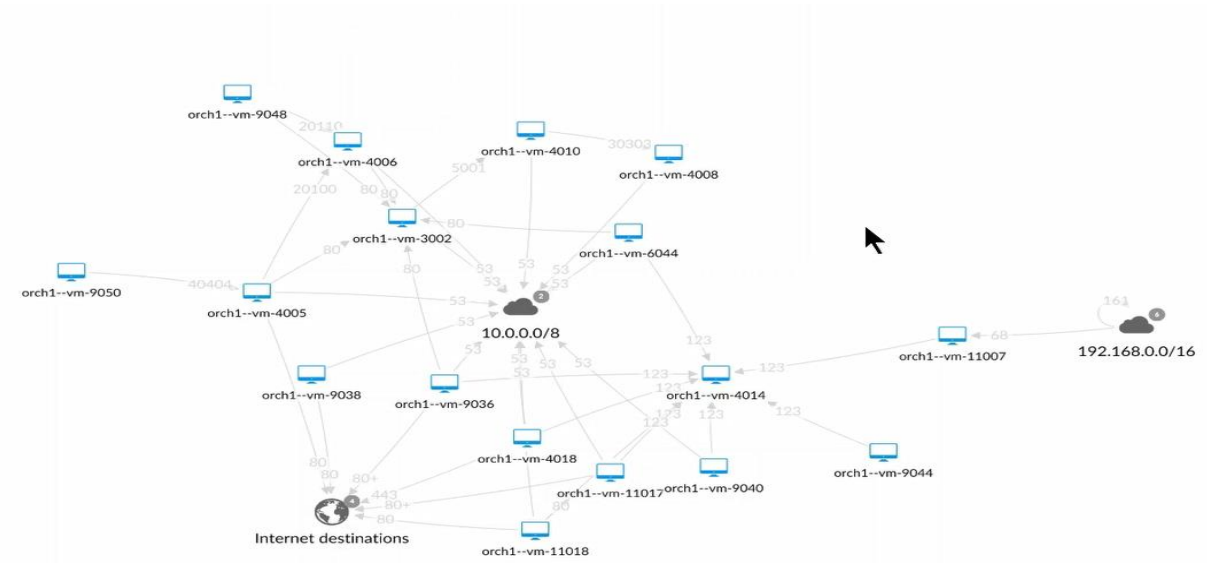
APP1
Network-A



DB1
Network-B



Guadcore: Application Dependency Mapping



Gaudicore: AI driven proposed Firewall rules for CX-1000 Switch Firewall



Quick Links | Create Policy | Network Log | Explore

Unpublished Changes | mharrison

Project Rules

Section | Source | Destination | Ports/Protocols | Hits | State

Section	Source	Destination	Ports/Protocols	Hits	State
Allow	HR_portal +3 Any	DNS Any	53 TCP	0	Create
Block	* Any	DNS Any	Any TCP UDP	0	Create
Block	DNS Any	* Any	Any TCP UDP	0	Create

Success: The rule has been moved to the Block section

AppName: ERP-2, AppName: Sales_db, AppName: HR_portal, AppName: DNS, AppName: Eng-app-1, AppName: Unknown

Ringence an Application

1 Draft/Published 2 Published Alert 3 Published Blocked

Back to Configuration Publish



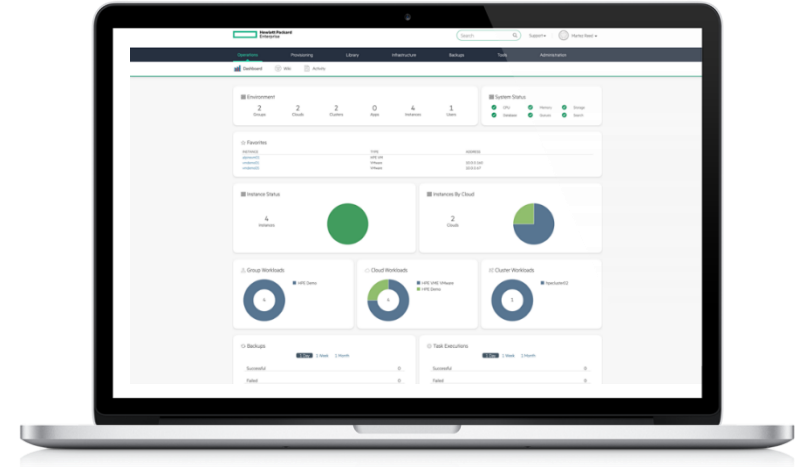
Modernise

to the best infrastructure & runtime for traditional
and emerging workloads



Unify & Simplify VM Operations with HPE Morpheus VM Essentials (VME)

- 透過整合式**HPE VM Essentials**降低費用
- 簡化 **VMware** 與 **HPE VME** 之間的管理
- 未來導向 **IT**，支援靈活消費與升級路徑
- 企業級支援與生態系統降低風險



HPE VM Essentials

Virtual machine
provisioning

Basic provisioning &
task automation

IPAM & DNS
orchestration

Secrets
management

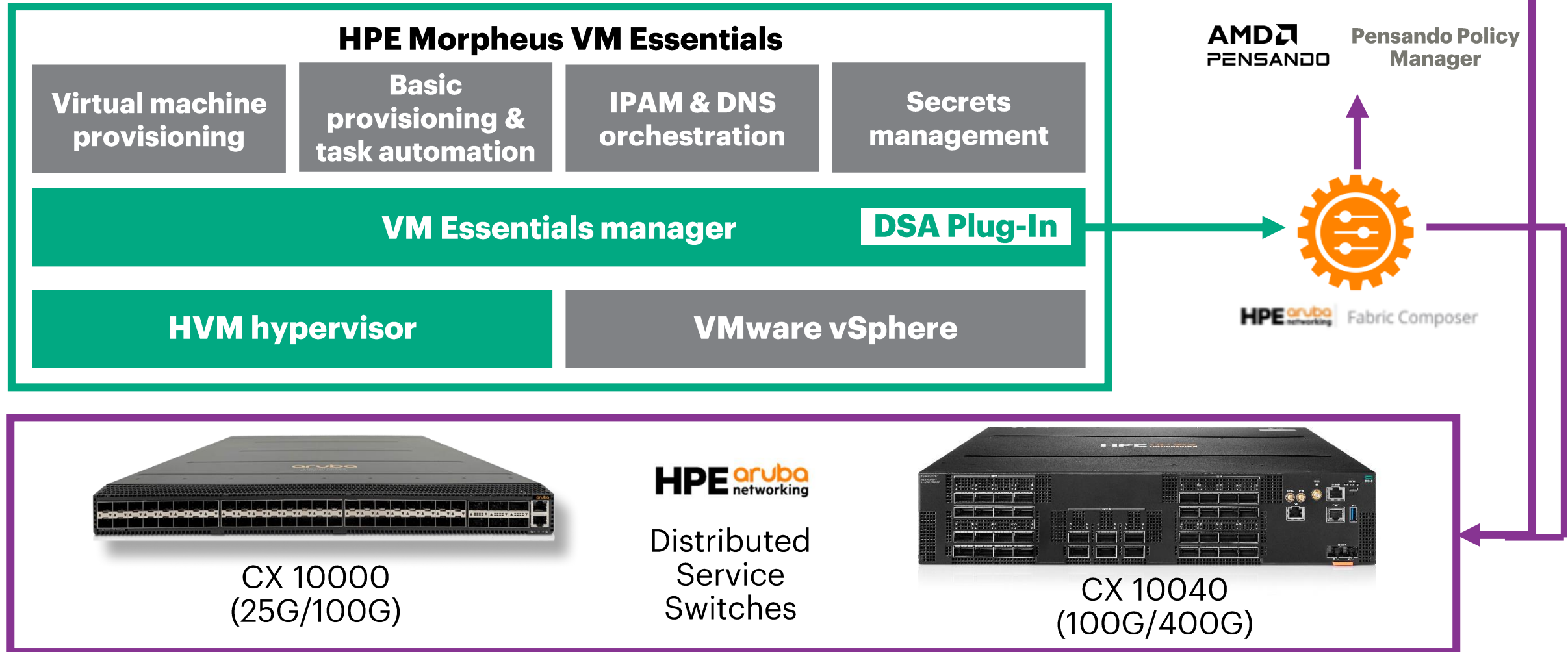
HVM manager

HVM cluster

VMware vSphere ESXi cluster

HPE VM Essentials – HPE Aruba Distributed Service Architecture

Best of Breed Infrastructure Virtualization from a SINGLE VENDOR



Broadcom licensing changes have caused significant disruption for customers

- **Bundles only:** VCF, VVF, vSphere Standard
- **No more perpetual licenses**
- **No more ELAs**
- **Lower discounting**
- **Extra charges** (e.g., vSAN)

Effective price increase of

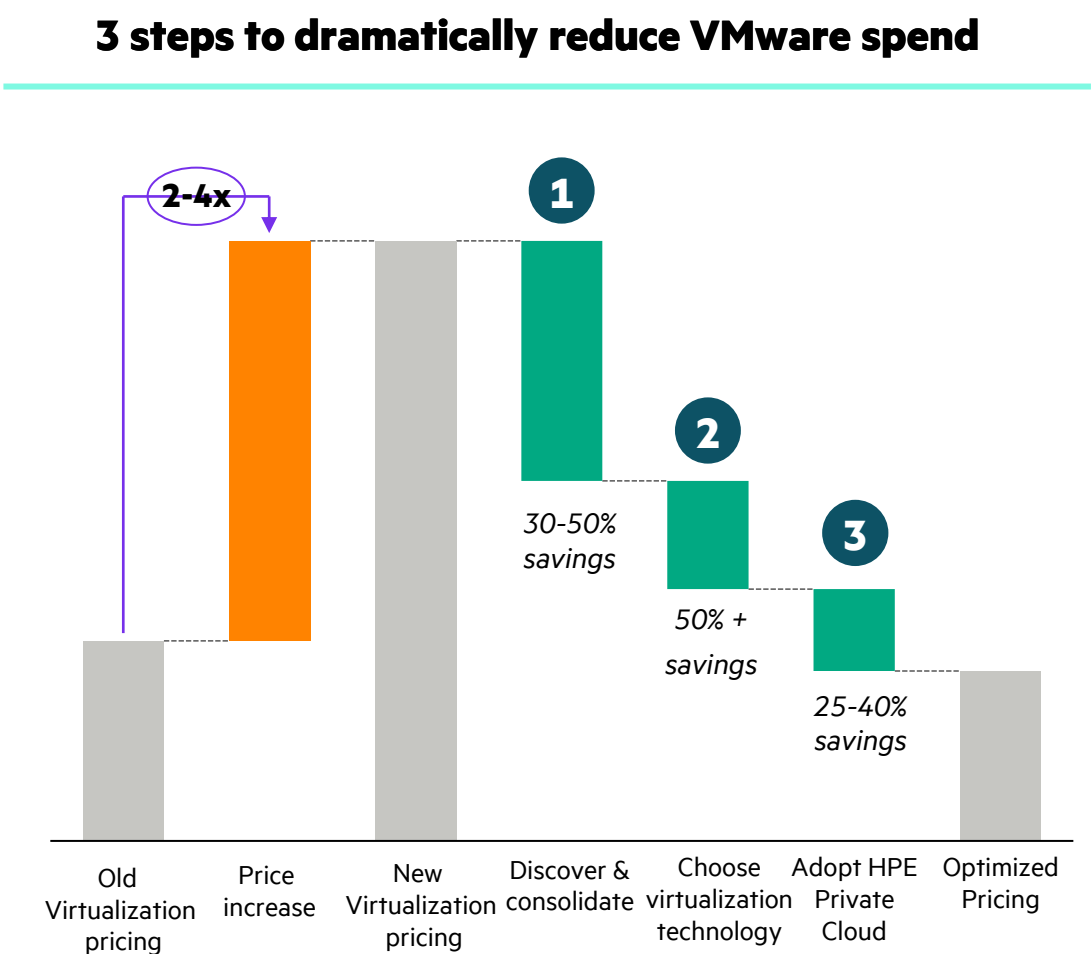
2-4x

for most customers*

Note: *Some customers experience effective price increases of 15x or more

HPE has a proven playbook for customers to reduce virtualization TCO

TCO reduction playbook	Savings
1 Assess VM use and utilization through HPE CloudPhysics , and consolidate VMs	30 – 50%
2 Select Virtualization technology that best fits your needs	50% +
3 Adopt HPE Private Cloud solutions and independently scalable HPE Alletra Storage to minimize VMware licenses	25 – 40+%
Reduction in virtualization costs	Up to 80%+





HPE Financial Services



Do more and move fast

with **HPE Financial
Services**

Maximize budget flexibility with **financing
and leasing** solutions tailored to your
business goals.

Boost capacity, stay tech-ready, and recover
value from aging assets through end-to-end
IT lifecycle services — including resale,
sale-leaseback programs, secure
decommissioning, and recycling.



\$1B

Put back into customer budgets over
the last 3 years through IT asset
lifecycle services

SOURCE: HPE Technology Resource Center Data Report, FY24

Plan for, acquire, consume and responsibly retire tech

Adaptable financing programs and IT lifecycle services that can help you overcome budget constraints and optimize project economics

Financing Programs

- Financing and leasing
- Payment Relief Program
- Payment Deferral Program
- HPE Extended Deployment Services
- Special programs aligned to HPE solutions

IT Lifecycle Services

- HPE Asset Upcycling Services (ITAD)
- HPE Accelerated Migration Services (Sale-Leaseback)
- HPE Certified Pre-owned Technology Services
- Decommissioning services
- Logistics - pack and ship services (PASS)
- Short-term rentals

IT Sustainability

- HPE Circular Economy Estimator Tool
- HPE Circular Economy Report
- HPE Technology Renewal Center (Andover, MA, USA & Erskine, Scotland)



Visit HPE Networking booths
to learn more





Thank You

